

ANNEX

Selected policy indicators

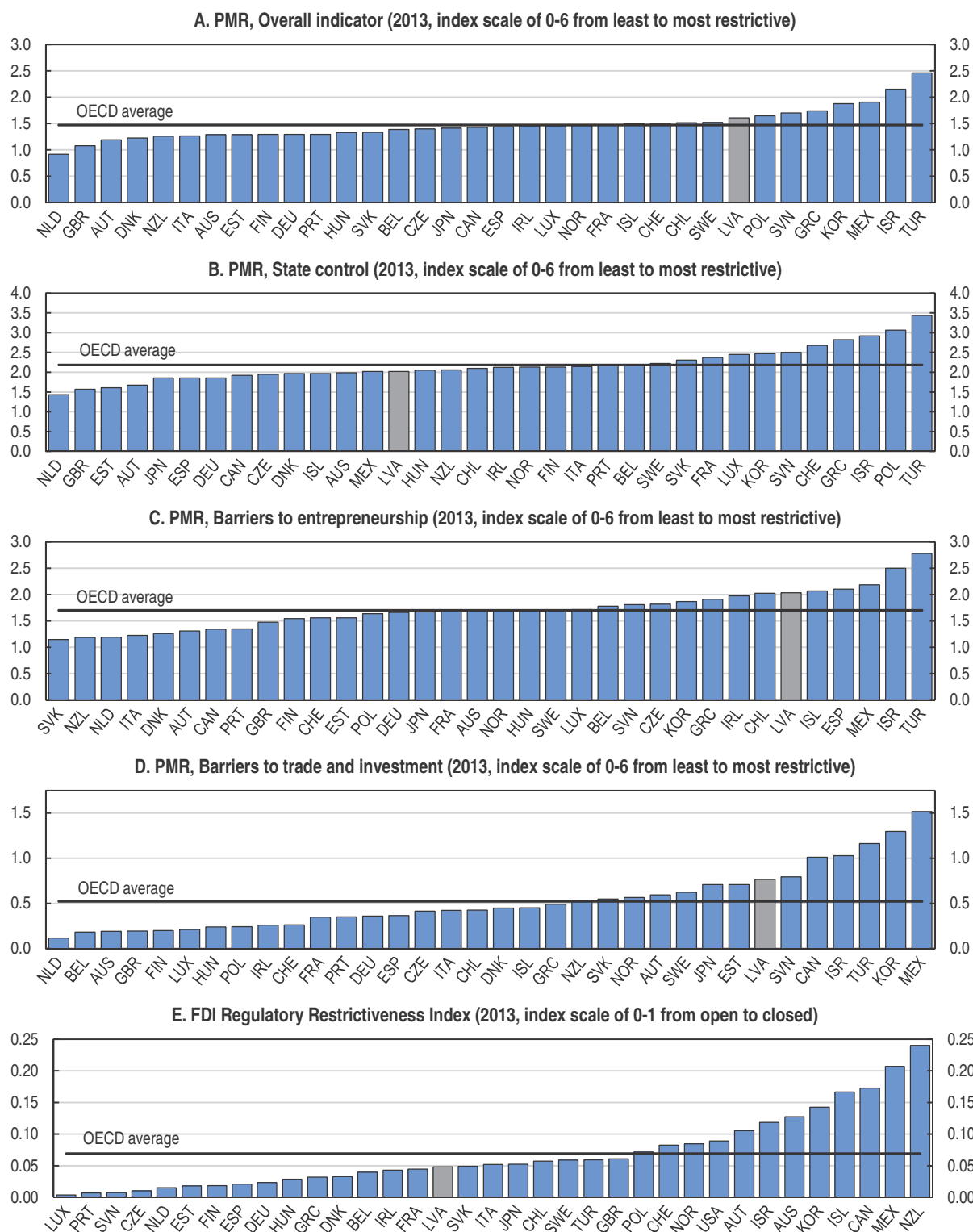

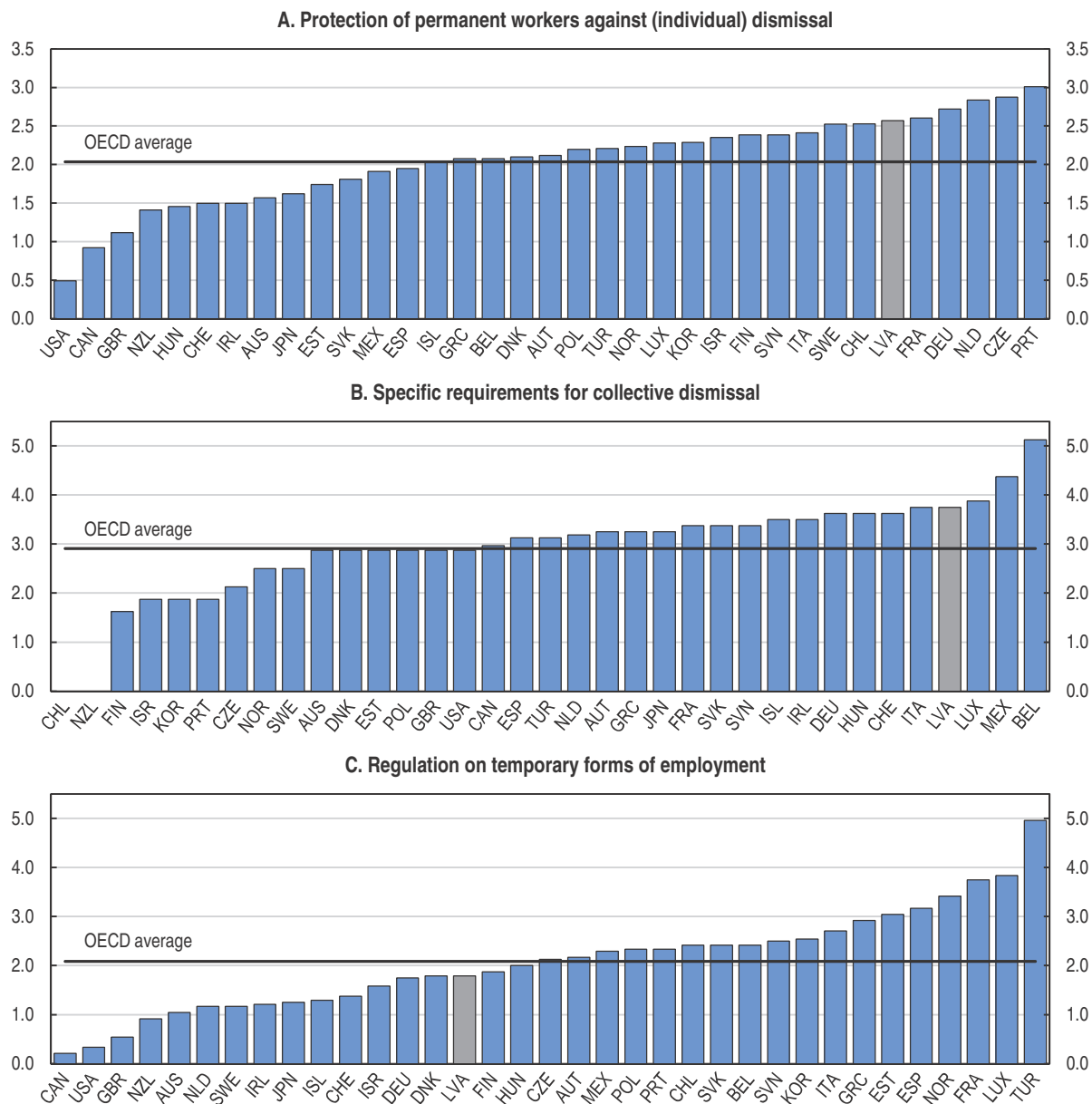
Figure A1. **Product Market Regulation (PMR) and FDI Regulatory Restrictiveness Index**Source: OECD (2013), Product Market Regulation Database and www.oecd.org/investment/index.StatLink  <http://dx.doi.org/10.1787/888933183725>

Figure A2. **OECD indicators on Employment Protection Legislation (EPL)**

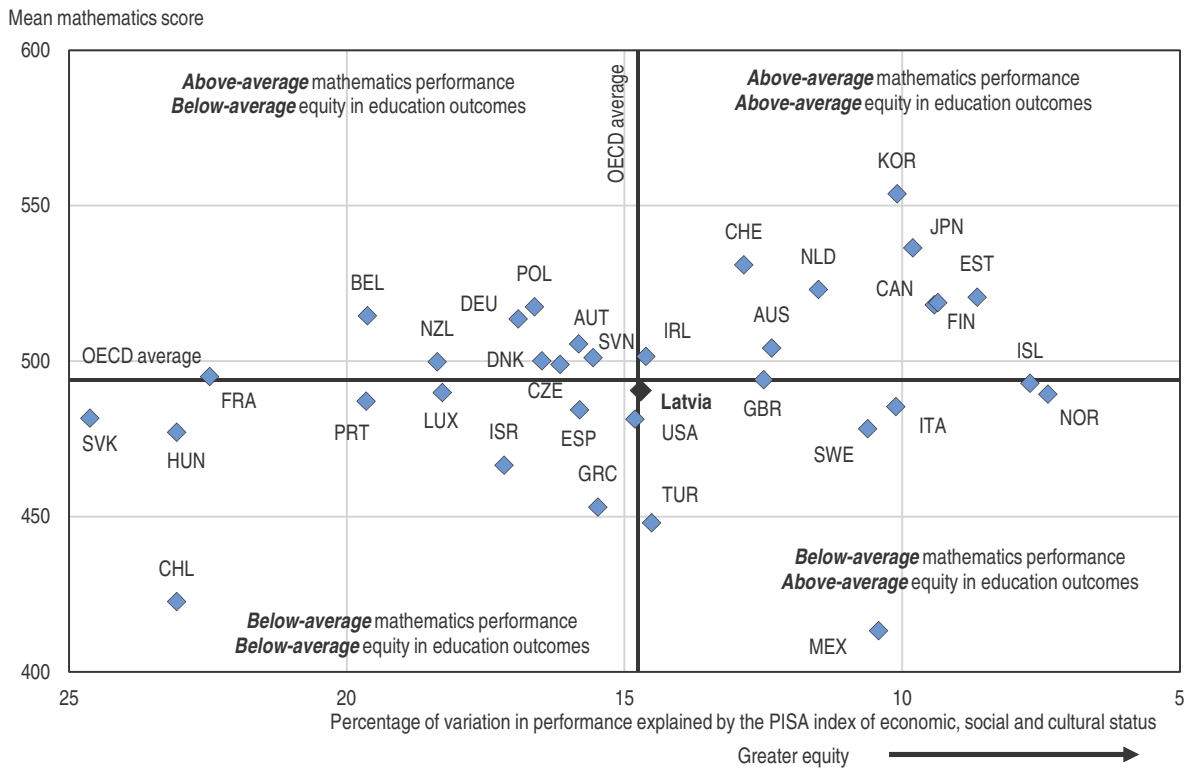
2013, index scale of 0-6 from least to most restrictive



Source: OECD Employment Protection Database, 2013 update.

StatLink <http://dx.doi.org/10.1787/888933183731>

Figure A3. **Student performance and equity**

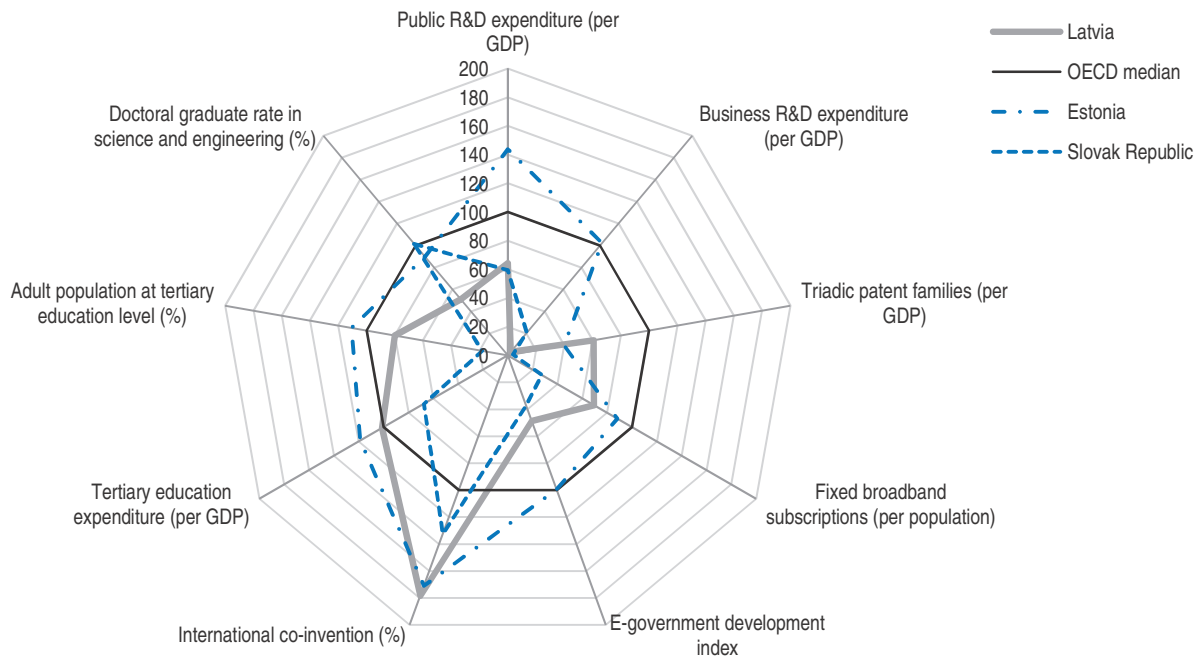


Source: OECD (2014), Education at a Glance, Chart A9.4.

StatLink <http://dx.doi.org/10.1787/888933183742>

Figure A4. **Science and innovation indicators**

Normalised index of performance relative to the median values in the OECD area (Index median = 100)

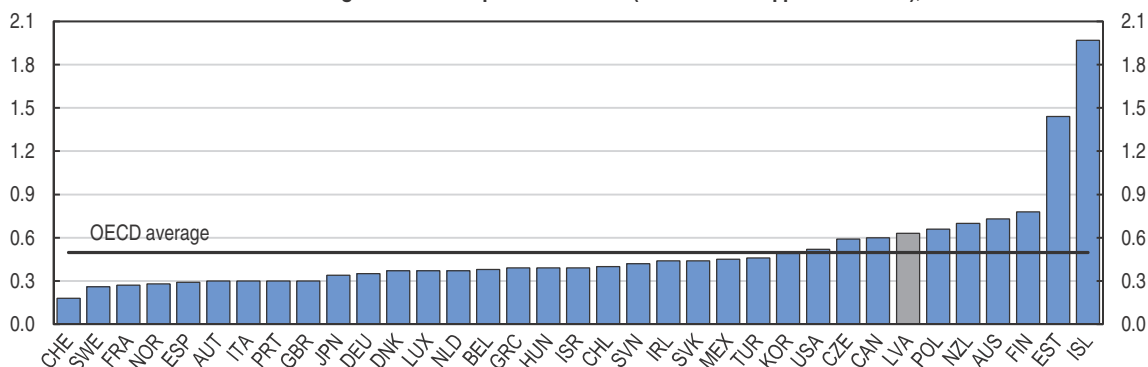


Source: OECD (2014), OECD Science, Technology and Industry Outlook.

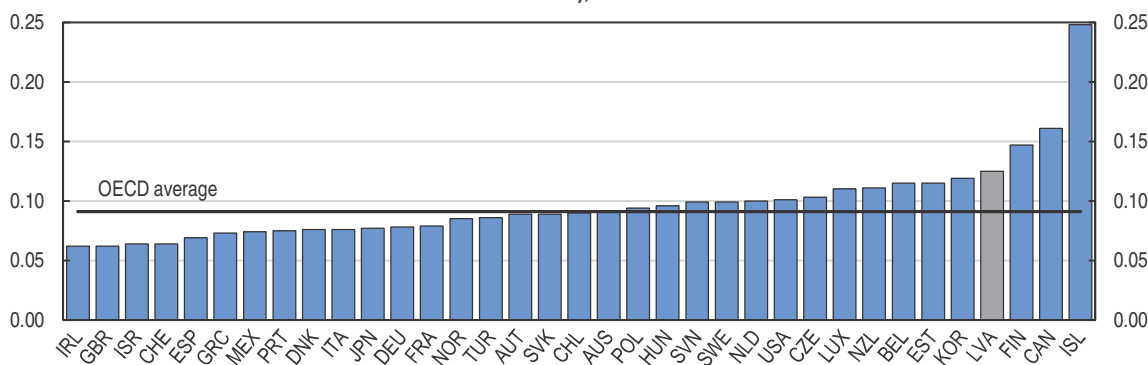
StatLink <http://dx.doi.org/10.1787/888933183751>

Figure A5. **Environmental indicators**

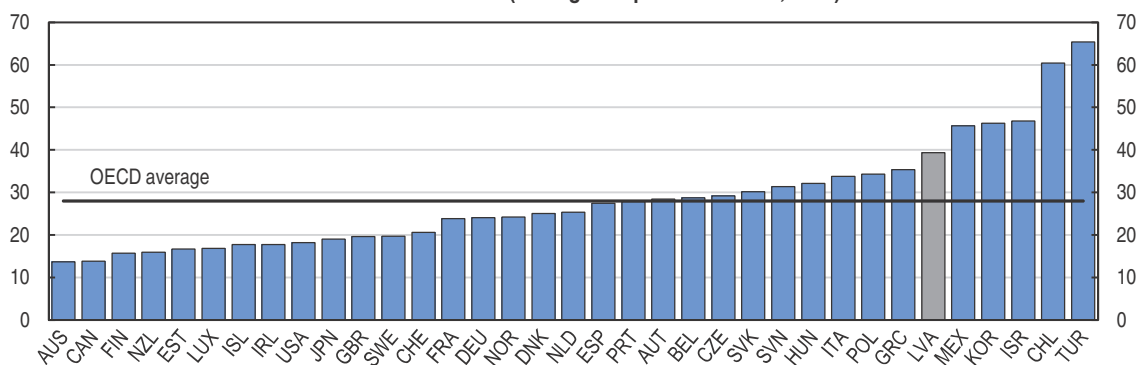
A. Greenhouse gas emissions per unit of GDP (tonnes CO2 eq per 1000 USD), 2010



B. Energy intensity (total final energy consumption per unit of GDP, toe per thousand 2005 USD of GDP calculated using PPPs), 2012

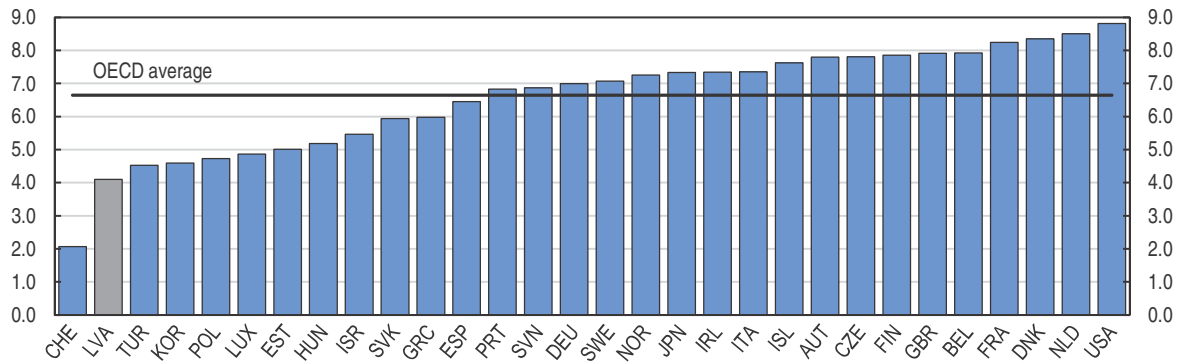
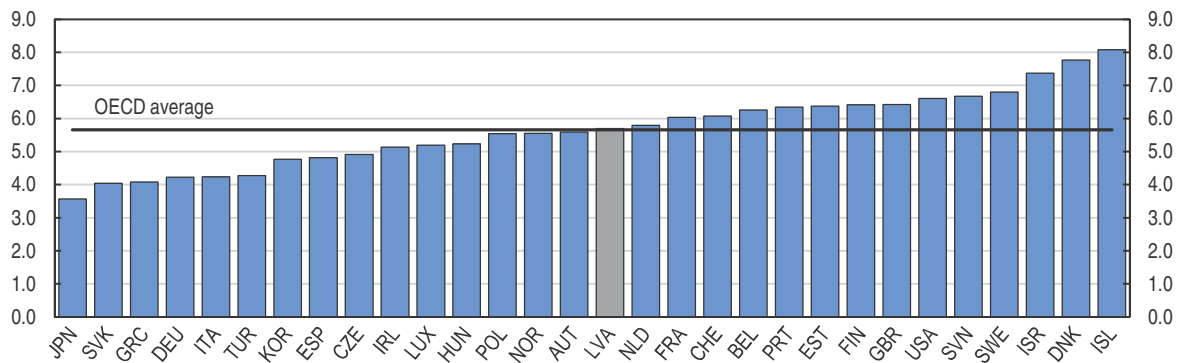
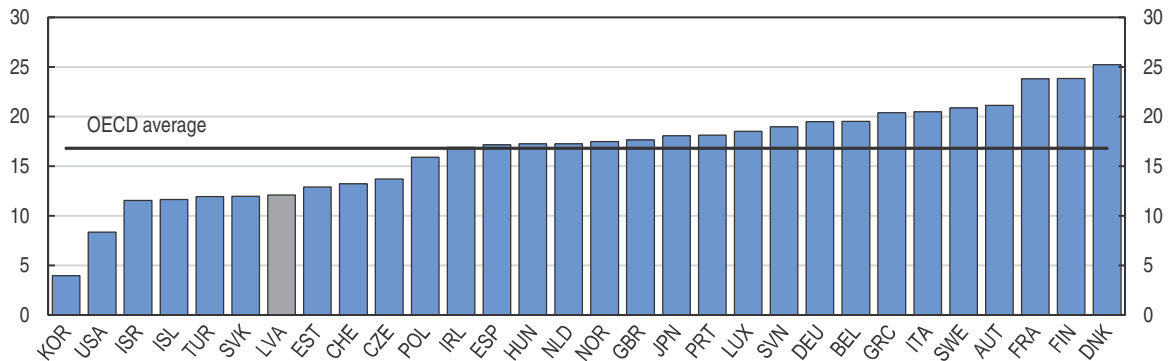


C. PM10 emissions (micrograms per cubic meter, 2011)



Source: OECD/IEA Energy database and World Bank, WDI database.

StatLink <http://dx.doi.org/10.1787/888933183762>

Figure A6. **Public spending****A. Health expenditure, % of GDP, 2011****B. Education expenditure, % of GDP, 2011****C. Social protection expenditure, % of GDP, 2011**

Source: OECD National Accounts at a glance database and Eurostat database.


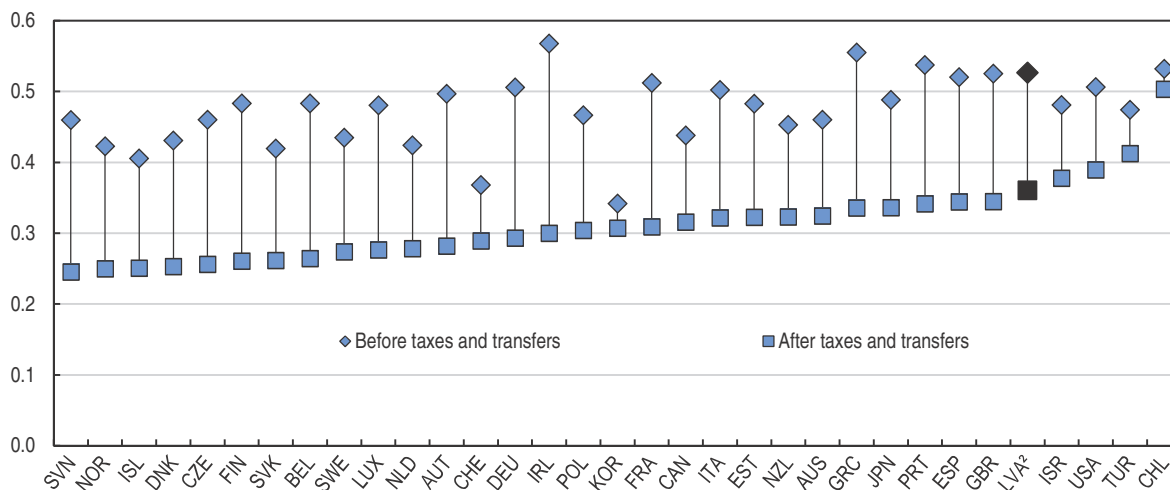
StatLink  <http://dx.doi.org/10.1787/888933183778>


Figure A7. Income redistribution
 Gini coefficient, scale from 0 “perfect equality” to 1 “perfect inequality”, 2011¹



1. 2009 for Japan, 2010 for Belgium, 2012 for Australia, Finland, Korea, Netherlands and the United States.

2. OECD Secretariat calculations from EU-SILC – preliminary results.

Source: OECD Income Distribution database and OECD Secretariat calculations.

StatLink  <http://dx.doi.org/10.1787/888933183782>



From:
OECD Economic Surveys: Latvia 2015

Access the complete publication at:
<https://doi.org/10.1787/9789264228467-en>

Please cite this chapter as:

OECD (2015), "Selected policy indicators", in *OECD Economic Surveys: Latvia 2015*, OECD Publishing, Paris.

DOI: https://doi.org/10.1787/eco_surveys-lva-2015-4-en

This work is published under the responsibility of the Secretary-General of the OECD. The opinions expressed and arguments employed herein do not necessarily reflect the official views of OECD member countries.

This document and any map included herein are without prejudice to the status of or sovereignty over any territory, to the delimitation of international frontiers and boundaries and to the name of any territory, city or area.

You can copy, download or print OECD content for your own use, and you can include excerpts from OECD publications, databases and multimedia products in your own documents, presentations, blogs, websites and teaching materials, provided that suitable acknowledgment of OECD as source and copyright owner is given. All requests for public or commercial use and translation rights should be submitted to rights@oecd.org. Requests for permission to photocopy portions of this material for public or commercial use shall be addressed directly to the Copyright Clearance Center (CCC) at info@copyright.com or the Centre français d'exploitation du droit de copie (CFC) at contact@cfcopies.com.