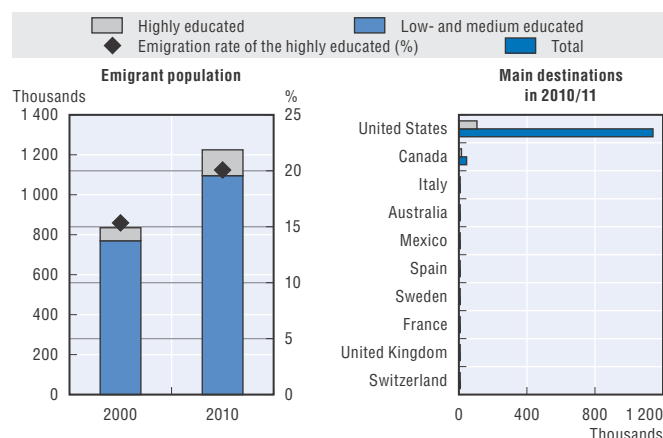


LATIN AMERICA AND THE CARIBBEAN – EL SALVADOR

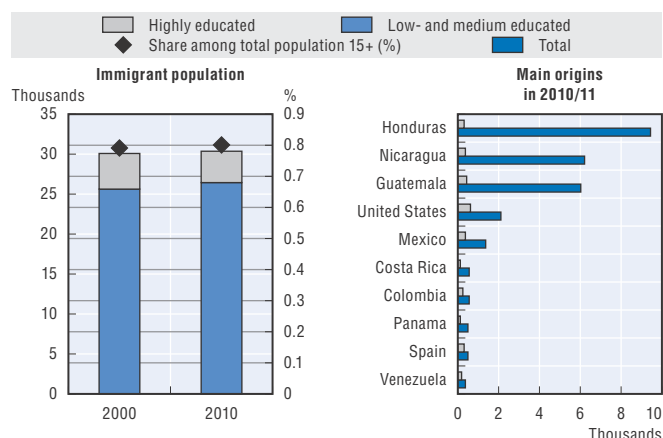
Total population 2013 (millions)	6.3	El Salvador compared to:	World	Region
Population growth 2013 (annual, in %)	0.7	Human Development Index (HDI)	115/187	26/31
GDP per capita 2013 (current USD)	3 826	GDP per capita	113/209	24/40
GDP growth 2013 (annual, in %)	1.7	Emigration rate	33/203	17/37
Poverty rate 2012 (USD PPP 2 a day, in %)	8.75	Emigration rate of the highly educated	31/144	8/23

Age structure of the population (2013): "0-14": 30%; "15-64": 63%; "65+": 7%

Emigrant population (15+) living in OECD countries



Immigrant population (15+)



Emigrant population: Persons born in El Salvador living abroad

	2010/11									2000/01
	OECD and selected non-OECD destinations			OECD destinations			Intra-regional (15/35 countries)			OECD destinations
	Men	Women	Total	Men	Women	Total	Men	Women	Total	Total
Population 15+										
Emigrant population (thousands)	634.2	607.2	1 241.3	626.8	599.0	1 225.8	7.4	8.1	15.5	835.8
Recent emigrants (thousands)	49.8	47.5	97.3	137.8
15-24 (%)	12.9	10.7	11.8	12.9	10.7	11.8	9.6	10.2	9.9	20.0
25-64 (%)	83.7	82.1	82.9	83.7	82.2	83.0	79.4	76.9	78.1	76.3
65+ (%)	3.5	7.2	5.3	3.4	7.2	5.2	11.0	12.9	12.0	3.7
Low educated (%)	54.7	52.7	53.7	54.9	52.7	53.8	42.8	51.0	47.2	63.0
Highly educated (%)	10.0	11.4	10.7	9.8	11.3	10.5	27.5	22.7	24.9	7.7
Total emigration rates (%)	24.0	21.5	22.7	23.8	21.3	22.5	0.4	0.4	0.4	18.5
Emigration rates of the highly educated (%)	19.8	21.3	20.5	19.3	20.8	20.0	0.8	0.7	0.7	15.3

Main OECD and selected non-OECD destinations in 2010/11

Population 15+	Total		Recent emigrants	Women	Highly educated	15-24	Total in 2000/01
	Thousands	%					
United States	1 142.0	92.0	7.7	48.5	9.1	11.9	775.0
Canada	43.4	3.5	7.6	49.5	36.7	8.1	37.0
Australia	9.5	0.8	2.4	52.0	32.3	8.2	8.8
Italy	9.1	0.7	24.1	69.8	6.2	16.3	3.6
Costa Rica	8.9	0.7	..	55.4	25.9	9.1	8.3
Mexico	8.2	0.7	17.2	59.0	16.4	9.9	5.3
Spain	7.5	0.6	47.3	60.7	27.6	14.5	1.8
Panama	2.6	0.2	..	51.2	18.2	13.6	1.9
Sweden	2.1	0.2	12.4	48.6	26.8	10.7	2.2
Nicaragua	1.8	0.2	..	47.0	29.3	11.0	1.7

Indicators of the labour market situation of persons born in El Salvador living in OECD countries

	2000/01			2010/11		
	Men	Women	Total	Men	Women	Total
Population 15-64						
Employment rate (%)	69.5	51.8	61.0	83.5	64.1	74.2
Unemployment rate (%)	6.7	10.6	8.3	7.8	10.3	8.9
Participation rate (%)	74.6	57.9	66.6	90.6	71.4	81.4
Total employed (thousands)	291.4	199.8	491.2	502.5	354.3	856.8
Employment rate of the highly educated (%)	79.7	68.7	74.3	87.9	74.3	80.8
Unemployment rate of the highly educated (%)	5.5	5.9	5.7	5.9	8.5	7.2
Highly educated in low-and medium-skilled jobs (%)	54.9	57.0
Highly educated employed (thousands)	25.0	21.2	46.2	51.3	47.2	98.6
Distribution of employment by occupation (%), population 15+						
Highly skilled occupations	10.4	8.9	12.5	10.4
<i>Of which: Health professionals</i>	6.5
<i>Of which: Teaching professionals</i>	12.3
Medium-skilled occupations	87.8	90.1	85.4	88.1
Low-skilled occupations	1.8	1.1	2.1	1.5

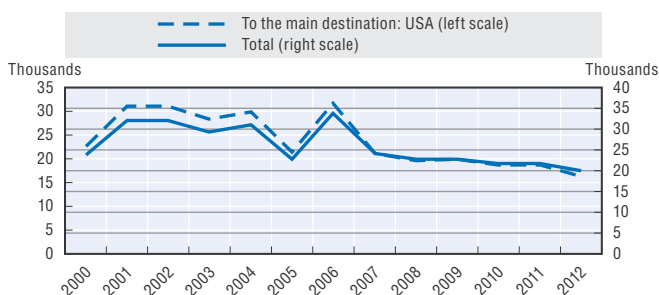
Main OECD destinations by education level in 2010/11 (population 15+)

Highly educated emigrants (thousands)	Change since 2000/01 (%)	Low educated emigrants (thousands)	Change since 2000/01 (%)		
United States	103.4	+101.7	United States	632.0	+26.0
Canada	15.9	+85.7	Canada	10.9	-22.7
Australia	3.1	+77.3	Mexico	5.3	+89.4
Spain	2.1	+510.3	Italy	4.8	+108.4
Mexico	1.4	+6.9	Spain	3.6	+242.4
Total	128.8	+100.0	Total	659.0	+25.3

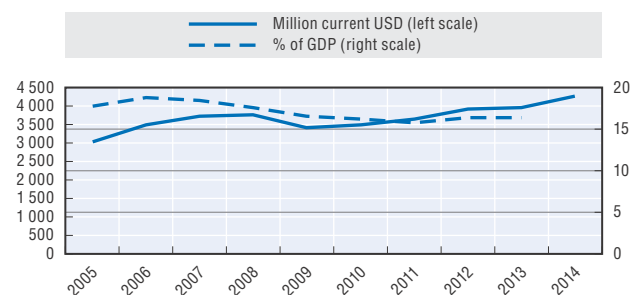
International students from El Salvador in OECD countries

Five main destinations	2008	2010	2012
United States	941	1 197	1 115
Spain	101	263	202
France	151	176	173
Germany	72	89	164
Canada	56	48	63
Total	1 562	2 003	1 944

Legal migrant flows to the OECD



Remittance flows



Ten main OECD countries of destination for legal migrants in 2012 (numbers, % of the total flows to the country): USA (16 256, 1%), ITA (1 036, 0%), ESP (928, 0%), CAN (610, 0%), MEX (399, 2%), CHL (178, 0%), DEU (138, 0%), JPN (102, 0%), SWE (80, 0%), FRA (60, 0%).

Desire to emigrate, 2007-13

	Women	15-24	Highly educated	Employed	Total
Persons who would move permanently, if they had the opportunity to do so (%)	36	46	47	32	37
<i>Of which: Persons who are planning to move permanently in the next 12 months (%)</i>					11
<i>Of which: Persons who have already made any preparations for this move (e.g. visa application) (%)</i>					46

Three main desired countries of destination: United States (52%), Spain (12%), Canada (11%).

StatLink <http://dx.doi.org/10.1787/888933270800>



From:
Connecting with Emigrants
A Global Profile of Diasporas 2015

Access the complete publication at:
<https://doi.org/10.1787/9789264239845-en>

Please cite this chapter as:

OECD (2015), "El Salvador", in *Connecting with Emigrants: A Global Profile of Diasporas 2015*, OECD Publishing, Paris.

DOI: <https://doi.org/10.1787/9789264239845-38-en>

This work is published under the responsibility of the Secretary-General of the OECD. The opinions expressed and arguments employed herein do not necessarily reflect the official views of OECD member countries.

This document and any map included herein are without prejudice to the status of or sovereignty over any territory, to the delimitation of international frontiers and boundaries and to the name of any territory, city or area.

You can copy, download or print OECD content for your own use, and you can include excerpts from OECD publications, databases and multimedia products in your own documents, presentations, blogs, websites and teaching materials, provided that suitable acknowledgment of OECD as source and copyright owner is given. All requests for public or commercial use and translation rights should be submitted to rights@oecd.org. Requests for permission to photocopy portions of this material for public or commercial use shall be addressed directly to the Copyright Clearance Center (CCC) at info@copyright.com or the Centre français d'exploitation du droit de copie (CFC) at contact@cfcopies.com.