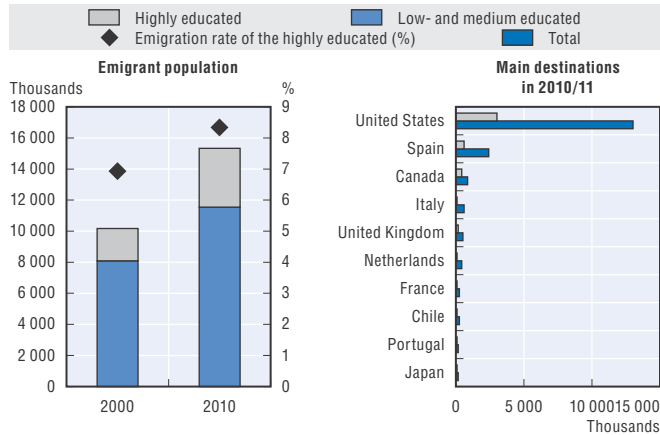


LATIN AMERICA AND THE CARIBBEAN

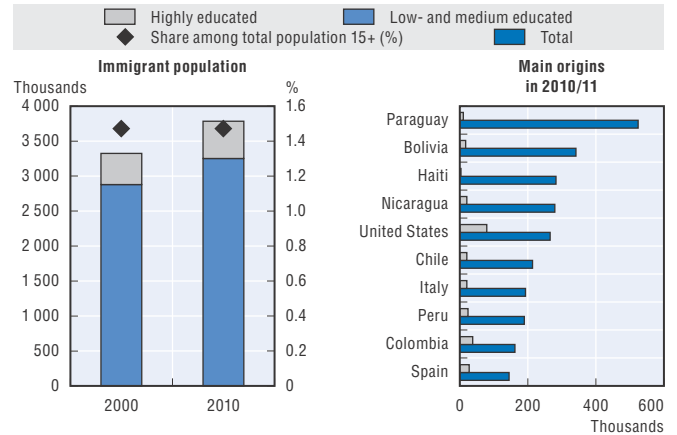
Total population (millions)	475.4
Population growth (annual, in %)	1.1
GDP per capita (current USD)	9 685
GDP growth (annual, in %)	3.4
Poverty rate (USD PPP 2 a day, in %)	9.13

Age structure of the population (2013): "0-14": 27%; "15-64": 66%; "65+": 7%

Emigrant population (15+) living in OECD countries



Immigrant population (15+)



Emigrant population: Persons born in Latin America and the Caribbean living abroad

	2010/11									2000/01
	OECD and selected non-OECD destinations			OECD destinations			Intra-regional (15/35 countries)			OECD destinations
	Men	Women	Total	Men	Women	Total	Men	Women	Total	Total
Population 15+										
Emigrant population (thousands)	8 429.5	9 525.0	17 954.5	7 198.2	8 240.9	15 439.2	1 220.1	1 273.5	2 493.6	10 264.1
Recent emigrants (thousands)	876.6	1 015.1	1 891.7	1 953.0
15-24 (%)	15.4	12.6	13.9	14.5	11.5	12.9	20.7	19.8	20.2	15.2
25-64 (%)	75.2	75.3	75.3	76.1	76.1	76.1	70.3	70.2	70.2	74.9
65+ (%)	9.4	12.1	10.8	9.4	12.4	11.0	9.0	10.0	9.5	9.9
Low educated (%)	40.3	37.4	38.8	35.3	32.6	33.9	69.5	69.1	69.3	41.5
Highly educated (%)	21.2	23.9	22.6	23.0	26.1	24.7	10.1	9.3	9.7	20.4
Total emigration rates (%)	4.9	5.3	5.1	4.2	4.7	4.4	0.7	0.8	0.8	3.6
Emigration rates of the highly educated (%)	9.2	8.6	8.9	8.6	8.2	8.3	0.8	0.6	0.6	6.9

Main OECD and selected non-OECD destinations in 2010/11

	Total		Recent emigrants	Women	Highly educated	15-24	Total in 2000/01
	Thousands	%					
Population 15+							
United States	10 388.4	57.9	8.9	52.1	23.0	11.8	7 806.4
Spain	1 936.0	10.8	30.8	54.0	22.6	17.8	692.8
Argentina	1 113.4	6.2	..	54.3	3.8	18.1	759.0
Canada	687.1	3.8	14.7	55.0	46.7	9.2	525.8
Italy	460.5	2.6	20.2	64.5	15.2	15.4	207.8
United Kingdom	398.8	2.2	16.9	55.8	37.7	8.4	308.0
Costa Rica	317.2	1.8	..	52.8	12.1	21.9	222.3
Netherlands	302.2	1.7	7.3	56.9	21.9	9.8	2.1
Dominican Republic	301.0	1.7	..	37.0	3.5	30.2	68.5
France	214.6	1.2	19.9	57.6	24.2	19.4	70.1

Labour market indicators of persons born in Latin America and the Caribbean living in OECD countries

	2000/01			2010/11		
	Men	Women	Total	Men	Women	Total
Population 15-64						
Employment-population ratio (%)	68.6	55.0	61.5	72.6	60.5	66.2
Unemployment rate (%)	8.0	10.5	9.2	13.5	15.1	14.3
Participation rate (%)	74.6	61.4	67.7	83.9	71.3	77.3
Total employed (thousands)	3 018.7	2 655.4	5 674.1	4 665.6	4 319.4	8 985.0
Employment rate of the highly educated (%)	80.8	69.3	74.5	82.5	71.7	76.3
Unemployment rate of the highly educated (%)	4.8	6.5	5.7	8.8	10.7	9.8
Highly educated in low-and medium-skilled jobs (%)	41.9	44.7
Highly educated employed (thousands)	708.0	743.4	1 451.4	1 233.2	1 405.0	2 638.1
Distribution of employment by occupation (%), population 15+						
Highly skilled occupations	19.5	25.1	23.8	21.2	26.0	23.8
<i>Of which: Health professionals</i>	10.8
<i>Of which: Teaching professionals</i>	12.1
Medium-skilled occupations	80.3	74.2	71.7	74.4	65.5	69.6
Low-skilled occupations	0.2	0.6	4.6	4.4	8.6	6.6

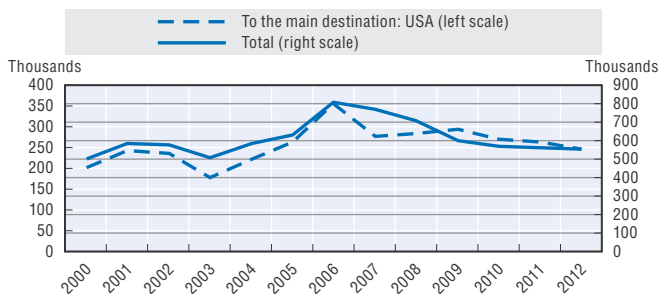
Main OECD destinations by education level in 2010/11 (population 15+)

Highly educated emigrants (thousands)	% growth since 2000/01	Low educated emigrants (thousands)	% growth since 2000/01		
United States	2 386.1	62.7	United States	3 422.4	5.6
Spain	437.8	192.2	Spain	804.5	125.3
Canada	321.1	77.7	Italy	197.2	97.2
United Kingdom	150.3	108.6	United Kingdom	141.9	5.5
Italy	69.9	127.1	Canada	120.9	-17.7
Total	3 783.8	82.1	Total	5 190.9	23.1

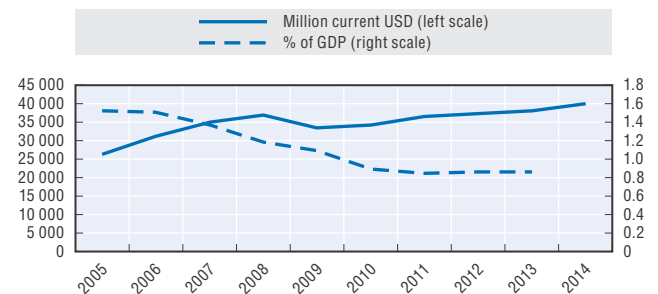
International students from Latin America and the Caribbean in OECD countries

Five main destinations	2008	2010	2012
United States	48 389	49 835	46 627
Spain	7 770	25 579	23 418
France	10 280	11 601	13 119
Italy	4 839	4 891	6 570
United Kingdom	6 278	6 382	6 338
Total	102 793	128 192	127 719

Legal migrant flows to the OECD



Remittance flows



Ten main OECD countries of destination for legal migrants in 2012 (numbers, % of the total flows to the country): USA (245 556, 23%), CHL (90 727, 86%), ESP (86 635, 25%), ITA (24 638, 7%), CAN (22 420, 8%), DEU (16 267, 1%), PRT (11 816, 34%), FRA (11 287, 7%), JPN (9 462, 3%), MEX (8 890, 45%).

Desire to emigrate, 2007-13

	Women	15-24	Highly educated	Employed	Total
Persons who would move permanently, if they had the opportunity to do so (%)	19	33	26	19	21
<i>Of which: Persons who are planning to move permanently in the next 12 months (%)</i>					10
<i>Of which: Persons who have already made any preparations for this move (e.g. visa application) (%)</i>					34

Three main countries of desired destination: United States (33%), Spain (18%), Italy (5%).



From:
Connecting with Emigrants
A Global Profile of Diasporas 2015

Access the complete publication at:
<https://doi.org/10.1787/9789264239845-en>

Please cite this chapter as:

OECD (2015), "Latin America and the Caribbean", in *Connecting with Emigrants: A Global Profile of Diasporas 2015*, OECD Publishing, Paris.

DOI: <https://doi.org/10.1787/9789264239845-27-en>

This work is published under the responsibility of the Secretary-General of the OECD. The opinions expressed and arguments employed herein do not necessarily reflect the official views of OECD member countries.

This document and any map included herein are without prejudice to the status of or sovereignty over any territory, to the delimitation of international frontiers and boundaries and to the name of any territory, city or area.

You can copy, download or print OECD content for your own use, and you can include excerpts from OECD publications, databases and multimedia products in your own documents, presentations, blogs, websites and teaching materials, provided that suitable acknowledgment of OECD as source and copyright owner is given. All requests for public or commercial use and translation rights should be submitted to rights@oecd.org. Requests for permission to photocopy portions of this material for public or commercial use shall be addressed directly to the Copyright Clearance Center (CCC) at info@copyright.com or the Centre français d'exploitation du droit de copie (CFC) at contact@cfcopies.com.