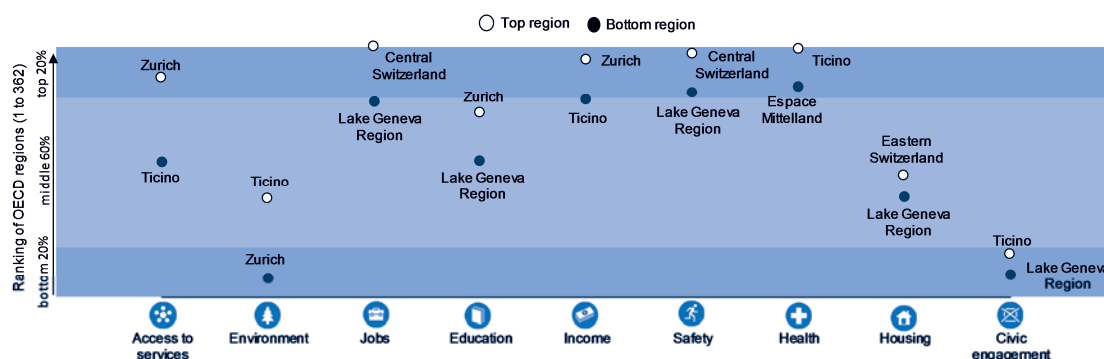


## Switzerland

All Swiss regions rank in the top 20% of the OECD regions in the jobs, income, safety and health dimensions, and in the bottom 20% in the civic engagement dimension. The largest regional disparities are in access to services and environment between the regions of Zurich and Ticino.

### Relative performance of Swiss regions by well-being dimensions



*Note:* Relative ranking of the regions with the best and worst outcomes in the 9 well-being dimensions, with respect to all 362 OECD regions. The nine dimensions are ordered by decreasing regional disparities in the country. Each well-being dimension is measured by the indicators in the table below.

Both high and low performing Swiss regions fare better than the OECD average in all of the well-being indicators, except for air pollution, voters in the last election and, for the low performing regions, number of rooms per person.

The employment rate is 75% in the low performing Swiss regions, 8 percentage points above the OECD average.

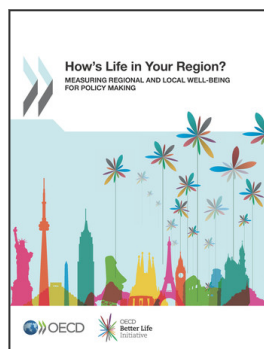
### How do the top and bottom regions in Switzerland fare on the well-being indicators?

	Swiss regions		Country average	OECD average
	Top 20%	Bottom 20%		
<b>Access to services</b>				
Households with broadband access (%), 2013	83.0	75.8	81.0	67.2
<b>Environment</b>				
Level of air pollution (PM <sub>2.5</sub> ) experienced by regional population (µg/m <sup>3</sup> ), 2012	14.3	19.5	16.4	12.3
<b>Jobs</b>				
Employment rate (%), 2013	84.7	75.3	81.8	66.7
Unemployment rate (%), 2013	2.9	6.5	4.2	8.0
<b>Education</b>				
Labour force with at least a secondary degree (%), 2013	86.0	81.9	83.8	74.6
<b>Income</b>				
Household disposable income per capita (in USD), 2011	30 571	22 657	26 403	18 907
<b>Safety</b>				
Homicide rate (per 100 000 people), 2012	0.4	0.7	0.6	4.2
<b>Health</b>				
Life expectancy at birth (years), 2012	83.3	82.3	82.7	79.5
Age adjusted mortality rate (per 1 000 people), 2012	6.5	7.0	6.8	8.1
<b>Housing</b>				
Rooms per person, 2012	1.8	1.5	1.7	1.8
<b>Civic engagement</b>				
Voters in last national election (%), 2013	53.5	46.7	48.3	67.7

StatLink <http://dx.doi.org/10.1787/888933129790>

*Note:* Data in the first two columns refer to average values in regions at the top and the bottom 20% of national ranking. The OECD average is computed for 34 countries except for housing (32 countries) and life expectancy at birth (33 countries).

*Source:* OECD Regional Well-Being Database, <http://dx.doi.org/10.1787/region-data-en>; [www.oecdregionalwellbeing.org](http://www.oecdregionalwellbeing.org).



From:

## How's Life in Your Region?

Measuring Regional and Local Well-being for Policy Making

Access the complete publication at:

<https://doi.org/10.1787/9789264217416-en>

### Please cite this chapter as:

OECD (2014), "Switzerland", in *How's Life in Your Region?: Measuring Regional and Local Well-being for Policy Making*, OECD Publishing, Paris.

DOI: <https://doi.org/10.1787/9789264217416-44-en>

This work is published under the responsibility of the Secretary-General of the OECD. The opinions expressed and arguments employed herein do not necessarily reflect the official views of OECD member countries.

This document and any map included herein are without prejudice to the status of or sovereignty over any territory, to the delimitation of international frontiers and boundaries and to the name of any territory, city or area.

You can copy, download or print OECD content for your own use, and you can include excerpts from OECD publications, databases and multimedia products in your own documents, presentations, blogs, websites and teaching materials, provided that suitable acknowledgment of OECD as source and copyright owner is given. All requests for public or commercial use and translation rights should be submitted to [rights@oecd.org](mailto:rights@oecd.org). Requests for permission to photocopy portions of this material for public or commercial use shall be addressed directly to the Copyright Clearance Center (CCC) at [info@copyright.com](mailto:info@copyright.com) or the Centre français d'exploitation du droit de copie (CFC) at [contact@cfcopies.com](mailto:contact@cfcopies.com).