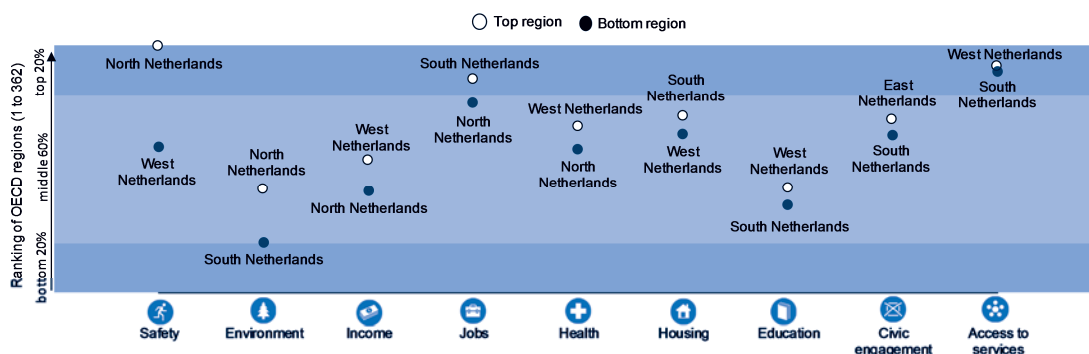


Netherlands

The widest regional disparities in the Netherlands are found in the safety dimension, with the North Netherlands ranking in the top 13% of the OECD regions and the West Netherlands at the median value. All four Dutch regions rank in the top 15% in access to services. The South Netherlands region is the top Dutch region in jobs and housing, but the last one in environment, education, civic engagement and access to services.

Relative performance of Dutch regions by well-being dimensions



Note: Relative ranking of the regions with the best and worst outcomes in the 9 well-being dimensions, with respect to all 362 OECD regions. The nine dimensions are ordered by decreasing regional disparities in the country. Each well-being dimension is measured by the indicators in the table below.

The high performing Dutch regions fare better than the OECD average in 9 of the 11 well-being indicators, except household disposable income and air pollution. In the low performing regions, 83% of households have access to broadband connection, 16 percentage points higher than the OECD average.

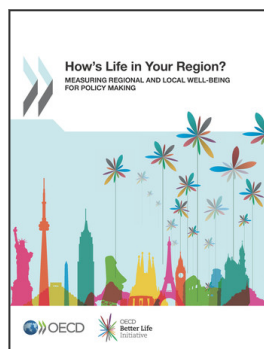
How do the top and bottom regions in the Netherlands fare on the well-being indicators?

		Dutch regions		Country average	OECD average
		Top 20%	Bottom 20%		
	Safety				
	Homicide rate (per 100 000 people), 2012	0.4	1.2	0.9	4.2
	Environment				
	Level of air pollution (PM _{2.5}) experienced by regional population (µg/m ³), 2012	12.7	16.9	15.8	12.3
	Income				
	Household disposable income per capita (in USD), 2011	16 997	13 927	16 150	18 907
	Jobs				
	Employment rate (%), 2013	76.0	73.6	75.4	66.7
	Unemployment rate (%), 2013	5.0	6.1	5.5	8.0
	Health				
	Life expectancy at birth (years), 2012	81.4	80.8	81.2	79.5
	Age adjusted mortality rate (per 1 000 people), 2012	7.8	8.1	7.9	8.1
	Housing				
	Rooms per person, 2012	2.1	2.0	2.0	1.8
	Education				
	Labour force with at least a secondary degree (%), 2013	76.7	73.5	75.2	74.6
	Civic engagement				
	Voters in last national election (%), 2013	76.7	73.4	75.4	67.7
	Access to services				
	Households with broadband access (%), 2013	85.0	83.3	84.7	67.2

StatLink <http://dx.doi.org/10.1787/888933129619>

Note: Data in the first two columns refer to average values in regions at the top and the bottom 20% of national ranking. The OECD average is computed for 34 countries except for housing (32 countries) and life expectancy at birth (33 countries).

Source: OECD Regional Well-Being Database, <http://dx.doi.org/10.1787/region-data-en>; www.oecdregionalwellbeing.org.



From:

How's Life in Your Region?

Measuring Regional and Local Well-being for Policy Making

Access the complete publication at:

<https://doi.org/10.1787/9789264217416-en>

Please cite this chapter as:

OECD (2014), "Netherlands", in *How's Life in Your Region?: Measuring Regional and Local Well-being for Policy Making*, OECD Publishing, Paris.

DOI: <https://doi.org/10.1787/9789264217416-35-en>

This work is published under the responsibility of the Secretary-General of the OECD. The opinions expressed and arguments employed herein do not necessarily reflect the official views of OECD member countries.

This document and any map included herein are without prejudice to the status of or sovereignty over any territory, to the delimitation of international frontiers and boundaries and to the name of any territory, city or area.

You can copy, download or print OECD content for your own use, and you can include excerpts from OECD publications, databases and multimedia products in your own documents, presentations, blogs, websites and teaching materials, provided that suitable acknowledgment of OECD as source and copyright owner is given. All requests for public or commercial use and translation rights should be submitted to rights@oecd.org. Requests for permission to photocopy portions of this material for public or commercial use shall be addressed directly to the Copyright Clearance Center (CCC) at info@copyright.com or the Centre français d'exploitation du droit de copie (CFC) at contact@cfcopies.com.