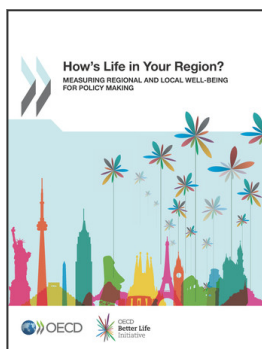


## Acronyms and abbreviations

<b>ABS</b>	Australian Bureau of Statistics
<b>BES</b>	Equitable and sustainable well-being
<b>CASEN</b>	National Socio-Economic Survey of Chile
<b>CBS</b>	Central Bureau of Statistics (Netherlands)
<b>CIW</b>	Canadian Index of Well-Being
<b>CMA</b>	Census Metropolitan Area
<b>CSD</b>	Census subdivision
<b>CSO</b>	Civil society organisation
<b>EC</b>	European Commission
<b>ENOE</b>	National Survey of Employment (Mexico)
<b>ENSANUT</b>	National Health and Nutrition Survey (Mexico)
<b>ENVIPE</b>	Survey on Victimisation and Perception of Public Safety (Mexico)
<b>EPA</b>	Environmental Protection Agency (United States)
<b>EU</b>	European Union
<b>EU-SILC</b>	European Survey on Income and Living Conditions
<b>GDP</b>	Gross domestic product
<b>GIS</b>	Geographical information system
<b>GVA</b>	Gross value added
<b>HANNN</b>	Healthy Ageing Network of the North of the Netherlands
<b>HDI</b>	Human Development Index
<b>HSM</b>	Hotspot Monitor
<b>ICT</b>	Information and communications technology
<b>IDMS</b>	Multiple Deprivation Index of the Sardinian municipalities
<b>IMD</b>	Indices of Multiple Deprivation (United Kingdom)
<b>INEGI</b>	National Institute of Statistics and Geography (Mexico)
<b>ISH</b>	Index of Social Health
<b>Istat</b>	National Institute of Statistics (Italy)
<b>MAP</b>	Measures of Australia’s Progress

<b>NEET</b>	Neither employed nor in education or training
<b>NUTS</b>	Nomenclature of Territorial Units for Statistics
<b>OECD</b>	Organisation for Economic Co-operation and Development
<b>OGD</b>	Open Government Data
<b>ONS</b>	Office of National Statistics (United Kingdom)
<b>PED</b>	State Development Plan (Mexico)
<b>PIIAC</b>	Programme for the International Assessment of Adult Competencies
<b>PISA</b>	Programme for International Students Assessment
<b>PM</b>	Particulate matter
<b>PSC</b>	Partnership for Sustainable Communities (United States)
<b>RUP</b>	Regional Development Plan (Denmark)
<b>SAMPLE</b>	Small Area Methods for Poverty and Living Condition Estimates
<b>SEIFA</b>	Socio-Economic Indexes for Areas (Australia)
<b>SMDR</b>	Severe material deprivation rate
<b>SMEs</b>	Small and medium-sized enterprises
<b>TL2</b>	Territorial level 2
<b>TL3</b>	Territorial level 3
<b>UNECE</b>	United Nations Economic Commission for Europe
<b>WARM</b>	Well-being and resilience measure
<b>WHO</b>	World Health Organization



**From:**

## **How's Life in Your Region?**

Measuring Regional and Local Well-being for Policy Making

**Access the complete publication at:**

<https://doi.org/10.1787/9789264217416-en>

### **Please cite this chapter as:**

OECD (2014), "Acronyms and abbreviations", in *How's Life in Your Region?: Measuring Regional and Local Well-being for Policy Making*, OECD Publishing, Paris.

DOI: <https://doi.org/10.1787/9789264217416-3-en>

This work is published under the responsibility of the Secretary-General of the OECD. The opinions expressed and arguments employed herein do not necessarily reflect the official views of OECD member countries.

This document and any map included herein are without prejudice to the status of or sovereignty over any territory, to the delimitation of international frontiers and boundaries and to the name of any territory, city or area.

You can copy, download or print OECD content for your own use, and you can include excerpts from OECD publications, databases and multimedia products in your own documents, presentations, blogs, websites and teaching materials, provided that suitable acknowledgment of OECD as source and copyright owner is given. All requests for public or commercial use and translation rights should be submitted to [rights@oecd.org](mailto:rights@oecd.org). Requests for permission to photocopy portions of this material for public or commercial use shall be addressed directly to the Copyright Clearance Center (CCC) at [info@copyright.com](mailto:info@copyright.com) or the Centre français d'exploitation du droit de copie (CFC) at [contact@cfcopies.com](mailto:contact@cfcopies.com).