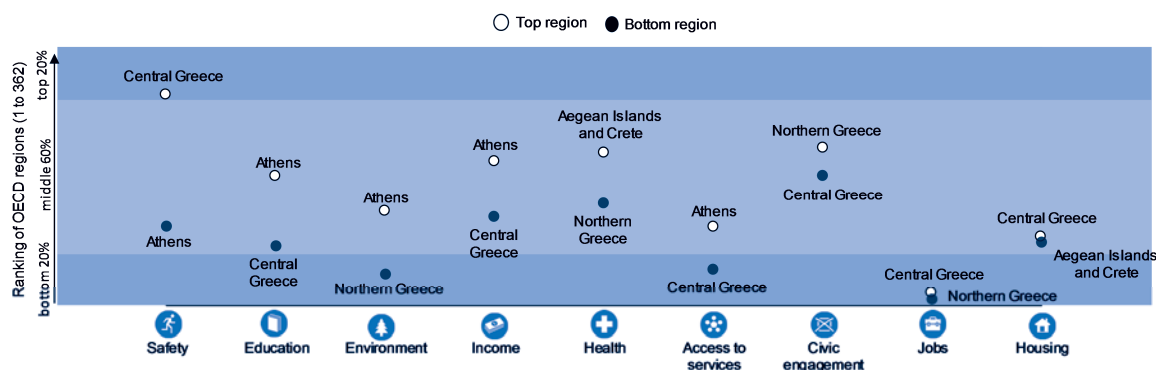


Greece

The largest in-country regional disparities are found in the safety dimension, with Central Greece ranking in the top 20% of the OECD regions and Athens in the bottom 30%. Wide regional disparities also exist in education, the 6th largest among OECD countries. All four Greek regions are in the bottom 5% of the OECD regional ranking when it comes to jobs.

Relative performance of Greek regions by well-being dimensions



Note: Relative ranking of the regions with the best and worst outcomes in the 9 well-being dimensions, with respect to all 362 OECD regions. The nine dimensions are ordered by decreasing regional disparities in the country. Each well-being dimension is measured by the indicators in the table below.

The high performing Greek regions fare better than the OECD average in four of the eleven well-being indicators: homicide rate, life expectancy, labour force with a secondary degree and voters in the last elections.

In the low performing regions, the unemployment rate is 24%, three times the OECD average.

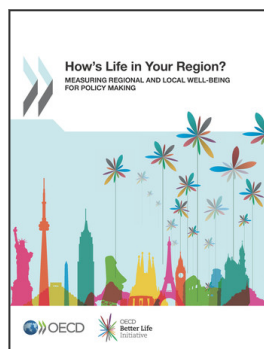
How do the top and bottom regions in Greece fare on the well-being indicators?

	Greek regions		Country average	OECD average
	Top 20%	Bottom 20%		
Safety				
Homicide rate (per 100 000 people), 2012	0.8	2.5	1.5	4.2
Education				
Labour force with at least a secondary degree (%), 2013	80.5	61.0	70.1	74.6
Environment				
Level of air pollution (PM _{2.5}) experienced by regional population (µg/m ³), 2012	14.1	18.6	15.8	12.3
Income				
Household disposable income per capita (in USD), 2011	17 367	13 169	14 919	18 907
Health				
Life expectancy at birth (years), 2012	81.3	80.4	80.7	79.5
Age adjusted mortality rate (per 1 000 people), 2012	8.3	9.1	8.7	8.1
Access to services				
Households with broadband access (%), 2013	60.7	37.7	50.3	67.2
Civic engagement				
Voters in last national election (%), 2013	72.8	68.2	70.8	67.7
Jobs				
Employment rate (%), 2013	54.0	50.2	52.0	66.7
Unemployment rate (%), 2013	19.3	24.3	23.0	8.0
Housing				
Rooms per person, 2012	1.2	1.2	1.2	1.8

StatLink <http://dx.doi.org/10.1787/888933129429>

Note: Data in the first two columns refer to average values in regions at the top and the bottom 20% of national ranking. The OECD average is computed for 34 countries except for housing (32 countries) and life expectancy at birth (33 countries).

Source: OECD Regional Well-Being Database, <http://dx.doi.org/10.1787/region-data-en>; www.oecdregionalwellbeing.org



From:

How's Life in Your Region?

Measuring Regional and Local Well-being for Policy Making

Access the complete publication at:

<https://doi.org/10.1787/9789264217416-en>

Please cite this chapter as:

OECD (2014), "Greece", in *How's Life in Your Region?: Measuring Regional and Local Well-being for Policy Making*, OECD Publishing, Paris.

DOI: <https://doi.org/10.1787/9789264217416-26-en>

This work is published under the responsibility of the Secretary-General of the OECD. The opinions expressed and arguments employed herein do not necessarily reflect the official views of OECD member countries.

This document and any map included herein are without prejudice to the status of or sovereignty over any territory, to the delimitation of international frontiers and boundaries and to the name of any territory, city or area.

You can copy, download or print OECD content for your own use, and you can include excerpts from OECD publications, databases and multimedia products in your own documents, presentations, blogs, websites and teaching materials, provided that suitable acknowledgment of OECD as source and copyright owner is given. All requests for public or commercial use and translation rights should be submitted to rights@oecd.org. Requests for permission to photocopy portions of this material for public or commercial use shall be addressed directly to the Copyright Clearance Center (CCC) at info@copyright.com or the Centre français d'exploitation du droit de copie (CFC) at contact@cfcopies.com.