

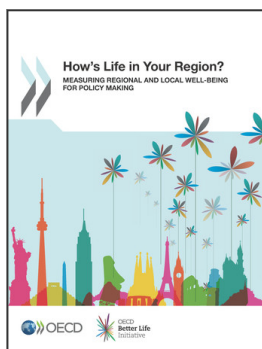
Reader's guide

For some figures, ISO countries codes are used

AUS	Australia	FRA	France	NLD	Netherlands
AUT	Austria	GBR	United Kingdom	NOR	Norway
BEL	Belgium	GRC	Greece	NZL	New Zealand
CAN	Canada	HUN	Hungary	POL	Poland
CHE	Switzerland	IRL	Ireland	PRT	Portugal
CHL	Chile	ISL	Iceland	SVK	Slovak Republic
CZE	Czech Republic	ISR	Israel	SVN	Slovenia
DEU	Germany	ITA	Italy	SWE	Sweden
DNK	Denmark	JPN	Japan	TUR	Turkey
ESP	Spain	KOR	Korea	USA	United States
EST	Estonia	LUX	Luxembourg		
FIN	Finland	MEX	Mexico		

Maps and data

- This report is based on data provided by national institutes of statistics. Indicators on unmet medical needs are based on a number of household and individual surveys (the European Survey on Income and Living Conditions – EU-SILC – for most European countries; the *Encuesta de Caracterización Socioeconómica Nacional* – CASEAN – for Chile; the the *Encuesta Nacional de Salud y Nutrición* – ENSANUT – for Mexico). Authors acknowledge the respective authorities providing the data, but remain solely responsible for all the work carried out for this report.
- The estimates on the average regional level of air pollution (PM_{2.5}) are derived from the computation of satellite-based observations in Van Donkelaar, A., R.V. Martin, M. Brauer and B.L. Boys (2014), “Global fine particulate matter concentrations from satellite for long-term exposure assessment”, *Environmental Health Perspectives*, forthcoming.
- The statistical data for Israel are supplied by and under the responsibility of the relevant Israeli authorities. The use of such data by the OECD is without prejudice to the status of the Golan Heights, East Jerusalem and Israeli settlements in the West Bank under the terms of international law.



From:

How's Life in Your Region?

Measuring Regional and Local Well-being for Policy Making

Access the complete publication at:

<https://doi.org/10.1787/9789264217416-en>

Please cite this chapter as:

OECD (2014), "Reader's guide", in *How's Life in Your Region?: Measuring Regional and Local Well-being for Policy Making*, OECD Publishing, Paris.

DOI: <https://doi.org/10.1787/9789264217416-2-en>

This work is published under the responsibility of the Secretary-General of the OECD. The opinions expressed and arguments employed herein do not necessarily reflect the official views of OECD member countries.

This document and any map included herein are without prejudice to the status of or sovereignty over any territory, to the delimitation of international frontiers and boundaries and to the name of any territory, city or area.

You can copy, download or print OECD content for your own use, and you can include excerpts from OECD publications, databases and multimedia products in your own documents, presentations, blogs, websites and teaching materials, provided that suitable acknowledgment of OECD as source and copyright owner is given. All requests for public or commercial use and translation rights should be submitted to rights@oecd.org. Requests for permission to photocopy portions of this material for public or commercial use shall be addressed directly to the Copyright Clearance Center (CCC) at info@copyright.com or the Centre français d'exploitation du droit de copie (CFC) at contact@cfcopies.com.