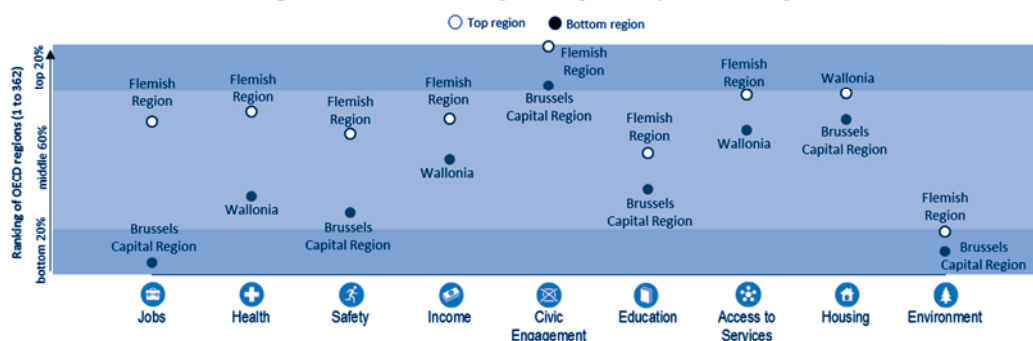


## Belgium

The three Belgian regions rank in the top 20% of the OECD regions in civic engagement, due to the compulsory voting system, and in the bottom 20% of the OECD regions when it comes to environment.

Belgium has the third largest regional disparities in jobs, with the Brussels Capital Region ranking among the bottom 5% of the OECD. Wide disparities are also present in health and safety.

### Relative performance of Belgian regions by well-being dimensions



*Note:* Relative ranking of the regions with the best and worst outcomes in the 9 well-being dimensions, with respect to all 362 OECD regions. The nine dimensions are ordered by decreasing regional disparities in the country. Each well-being dimension is measured by the indicators in the table below.

The high performing Belgian regions fare better than the OECD average for all indicators except the employment rate and the level of air pollution experienced by the regional population.

In the low performing regions, the percentage of households with broadband access is about 73%, higher than the OECD average.

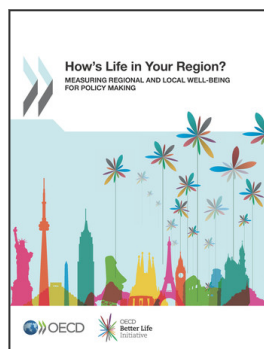
### How do the top and bottom regions in Belgium fare on the well-being indicators?

	Belgian regions		Country average	OECD average
	Top 20%	Top 20%		
<b>Jobs</b>				
Employment rate (%), 2013	66.5	53.2	62.1	66.7
Unemployment rate (%), 2013	4.6	17.8	7.7	8.0
<b>Health</b>				
Life expectancy at birth (years), 2012	81.4	78.9	80.4	79.5
Age adjusted mortality rate (per 1 000 people), 2012	7.6	9.1	8.1	8.1
<b>Safety</b>				
Homicide rate (per 100 000 people), 2012	1.2	2.8	1.7	4.2
<b>Income</b>				
Household disposable income per capita (in USD), 2011	19 156	16 457	18 074	18 907
<b>Civic engagement</b>				
Voters in last national election (%), 2013	90.8	82.8	89.2	67.7
<b>Education</b>				
Labour force with at least a secondary degree (%), 2013	81.3	74.2	79.1	74.6
<b>Access to services</b>				
Households with broadband access (%), 2013	78.0	72.7	76.0	67.2
<b>Housing</b>				
Rooms per person, 2012	2.3	2.1	2.2	1.8
<b>Environment</b>				
Level of air pollution (PM <sub>2.5</sub> ) experienced by regional population (µg/m <sup>3</sup> ), 2012	17.2	19.3	17.5	12.3

StatLink <http://dx.doi.org/10.1787/888933129258>

*Note:* Data in the first two columns refer to average values in regions at the top and the bottom 20% of national ranking. The OECD average is computed for 34 countries except for housing (32 countries) and life expectancy at birth (33 countries).

*Source:* OECD Regional Well-Being Database, <http://dx.doi.org/10.1787/region-data-en>; [www.oecdregionalwellbeing.org](http://www.oecdregionalwellbeing.org).



From:

## How's Life in Your Region?

Measuring Regional and Local Well-being for Policy Making

Access the complete publication at:

<https://doi.org/10.1787/9789264217416-en>

### Please cite this chapter as:

OECD (2014), "Belgium", in *How's Life in Your Region?: Measuring Regional and Local Well-being for Policy Making*, OECD Publishing, Paris.

DOI: <https://doi.org/10.1787/9789264217416-17-en>

This work is published under the responsibility of the Secretary-General of the OECD. The opinions expressed and arguments employed herein do not necessarily reflect the official views of OECD member countries.

This document and any map included herein are without prejudice to the status of or sovereignty over any territory, to the delimitation of international frontiers and boundaries and to the name of any territory, city or area.

You can copy, download or print OECD content for your own use, and you can include excerpts from OECD publications, databases and multimedia products in your own documents, presentations, blogs, websites and teaching materials, provided that suitable acknowledgment of OECD as source and copyright owner is given. All requests for public or commercial use and translation rights should be submitted to [rights@oecd.org](mailto:rights@oecd.org). Requests for permission to photocopy portions of this material for public or commercial use shall be addressed directly to the Copyright Clearance Center (CCC) at [info@copyright.com](mailto:info@copyright.com) or the Centre français d'exploitation du droit de copie (CFC) at [contact@cfcopies.com](mailto:contact@cfcopies.com).