

# Finland



## Demographics and macroeconomics

Nominal GDP (EUR bn)	178.8
GDP per capita (USD)	46 265.6
Population (000s)	5 289.0
Labour force (000s)	2 695.0
Employment rate	93.2
Population over 65 (%)	16.5
Dependency ratio <sup>1</sup>	32.4

Note: Data from 2007 or latest available year.

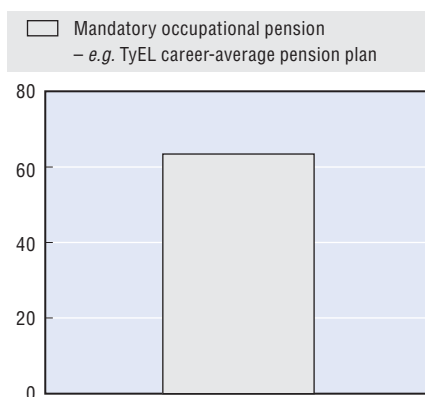
1. Ratio of over 65-year-olds to the labour force.

Source: OECD, various sources.

## Country pension design

### Potential average pension benefit

As a percentage of final earnings



Note: Additional pension income may come from other sources such as voluntary occupational pension, personal pension, general savings or investments, etc.

Source: OECD estimates.

### Structure of private pension system

#### Mandatory/Quasi-mandatory, occupational

- The earnings-related statutory pension provisions for private sector workers, farmers and self-employed persons
- The earnings-related statutory pension provision for public sector workers

#### Voluntary, occupational

- Company pension funds and industry-wide pension funds
- Group pension insurance contracts in life insurance companies
- Book reserve pension plans

#### Voluntary, personal

- Personal pension insurance contracts in life insurance companies

Source: OECD Global Pension Statistics.

## Pension funds data overview

	2003	2004	2005	2006	2007
Total investments (EUR bn)	78.6	94.2	108.0	119.1	127.0
Total investments as a % of GDP	53.9	61.8	68.6	71.3	71.0
Total contributions as a % of GDP	10.1	10.1	10.0	10.8	10.7
Total benefits as a % of GDP	9.1	9.1	9.3	8.8	8.7
Total number of funds	144	153	174	129	120

Source: OECD Global Pension Statistics.

StatLink <http://dx.doi.org/10.1787/517280237212>

## Private pension system's key characteristics

### Occupational mandatory

#### Overview

There are two main types of statutory pension plans in Finland:

- Earnings-related provisions for private-sector workers (known by its acronym TyEL), farmers, and the self-employed;
- Earnings-related provisions for public-sector workers.

The TyEL plan is a mandatory defined benefit arrangement, established through collective bargaining, which covers most of the private sector. Other types of plans provide for different categories of workers (see list of establishing acts below). TyEL was extensively reformed in 2005.

#### Coverage

Statutory earnings-related pension plans (TyEL and other schemes) cover employees aged 18 or older, people caring for children under three years old, and students attending degree courses of up to five years.

#### Contributions

The TyEL plan is funded by contributions from employees at rates (in 2008) of 4.1% of earnings for those under 53, and 5.2% for those aged 53 and older. Under the terms of the Employee Pensions Act, the aggregate employer-employee contribution rate for private-sector companies with wage bills of less than EUR 1.5 million is 21.4%. For larger firms it varies between 21.26% and 22.26%, while for occasional employers it is 22.4%.

For both employees and employers, the minimum earnings requirement for contribution purposes is EUR 47.08 a month, while there is no upper limit. The state covers the cost of contributions for students and people with children under three for those periods when they do not earn.

#### Benefits

The TyEL plan is of the career average type. It is usually funded through insurance schemes, although some large employers sponsor company-specific pension funds. The retirement age in the TyEL plan ranges from 63 to 68.

Benefit accrues at the rate of 1.5% of annual earnings between the ages of 18 and 52, at 1.9% between 53 and 62, and at 4.5% from 63. Pensionable earnings are adjusted for inflation with a 20% weighting and changes in earnings with an 80% weighting. Early and deferred pensions are allowed, but are also adjusted accordingly. Benefits, too, are indexed to earnings and inflation – changes in earnings are weighted at 20% and inflation at 80%. TyEL pension benefits are paid out in the form of a life annuity, but may be adjusted to increases in longevity.

### Occupational voluntary

#### Overview

In addition to the TyEL plan, some employers offer additional pension schemes which can be either defined benefit or defined contribution in nature. Typically, these plans supplement TyEL by offering higher accrual rates or lowering the retirement age.

## Coverage

The current coverage rate is 8% of the labour force.

## Contributions

As a rule, employee contributions represent 5% of earnings, though in some cases only employer contributions are required. Employer contributions are tax-deductible up to a ceiling of 5% of employee earnings, or EUR 5 000 per year.

## Market information

In 2007 the aggregate assets in all mandatory and voluntary occupational pension plans were worth approximately EUR 127 billion (USD 174 billion), of which TyEL plans alone accounted for EUR 77 billion (USD 113 billion). Pension plans had a total number of 4.4 million members (2.5 million active participants and 1.9 million retired beneficiaries). The number of registered pension funds was 120.

## Reference information

### Key legislation

2007

- The Employees Pensions Act (TyEL): the principal pension act covering employees in the private sector
- The Self-Employed Persons' Pensions Act (YEL)
- The Farmers' Pensions Act (MYEL) covers farmers, fishermen and reindeer herders
- The Seamen's Pensions Act (MEL)
- The State Employees' Pensions Act (VEL)
- The Local Government Pensions Act (KuEL): covers local government employees
- The Evangelical-Lutheran Church has its own pensions act: the Evangelical-Lutheran Church Pensions Act (KiEL).

### Key regulatory and supervisory authorities

Ministry of Social Affairs and Health, [www.stm.fi/Resource.phpx/eng/index.htx](http://www.stm.fi/Resource.phpx/eng/index.htx).

Finnish Center for Pensions, [www.etk.fi/Default.aspx?Lang=2](http://www.etk.fi/Default.aspx?Lang=2), [www.tyoelake.fi/Default.aspx?Lang=2](http://www.tyoelake.fi/Default.aspx?Lang=2).

The Social Insurance Institution of Finland, [www.kela.fi/in/internet/english.nsf](http://www.kela.fi/in/internet/english.nsf).

### Key official statistical references and sources on private pensions

Vakuutusvalvonta (2008), *Key Figures Summary*, [www.vakuutusvalvonta.fi/en/statistics/pension-insurance/key-figures-summary/key-figures-summary](http://www.vakuutusvalvonta.fi/en/statistics/pension-insurance/key-figures-summary/key-figures-summary), [http://cansim2.statcan.ca/cgi-win/cnsmcgi.pgm?Lang=E&SP\\_Action=Theme&SP\\_ID=3868](http://cansim2.statcan.ca/cgi-win/cnsmcgi.pgm?Lang=E&SP_Action=Theme&SP_ID=3868).

OECD, *Global Pension Statistics Project*, [www.oecd.org/daf/pensions/gps](http://www.oecd.org/daf/pensions/gps).

## Overview of private pension system by type of plan and financing vehicle

		Included in OECD GPS database	Type of plan				Financing vehicle			
			Voluntary	Mandatory/ Quasi- mandatory	Occupational	Personal	Pension fund	Book reserve	Pension insurance contract	Banks or investment companies
The earnings-related statutory pension provisions for private sector workers, farmers and self-employed persons	They are administered by pension insurance companies, company pension funds, industry-wide pension funds or separate pension institutions. This category includes the pension plans regulated by the <i>Employees' Pensions Act</i> (TyEL), by other employment pension laws for specific groups of workers, by the <i>Farmers' Pensions Act</i> and by the <i>Self-Employed Persons' Pensions Act</i> . The plans are partially pre-funded and are part of the social security system.	✓		✓	✓		✓			
The earnings-related statutory pension provision for public sector workers	They are administered by the government. This category includes the pension plans regulated by the <i>State Employees' Pension Act</i> , by the <i>Local Government Employees' Pensions Act</i> , and by the other pension laws for specific groups of workers. The plans are partially pre-funded and are part of the social security system.	✓		✓	✓		✓			
Company pension funds and industry-wide pension funds	In Finland statutory earnings-related pension plans cover the entire working population. Voluntary occupational and personal pension plans are supplementary pension plans, mainly used for lowering the retirement age and for raising the pension level of older age groups.	✓	✓		✓		✓			
Group pension insurance contracts in life insurance companies	The employer acts as policyholder.	✓	✓		✓				✓	
Book reserve pension plans	Sums entered in the balance sheet of the employer as reserves or provisions for pension plan benefits. Some assets may be held in separate accounts for the purpose of financing benefits.		✓		✓			✓		
Personal pension insurance contracts in life insurance companies	The employer or the member acts as policy holder. The plans are unit-linked or based on traditional with-profit policies.	✓	✓			✓			✓	

Source: OECD Global Pension Statistics.

**Notes**

1. Statistics Canada (2004), *Pension Plans in Canada*, Pensions and Wealth Research Series, 1 January.
2. Statistics Canada.
3. The Reserve Fund is established with 5% of the pension company profits.
4. The TFR is a sort of severance pay scheme that the employer has to pay to an employee in the case of his dismissal or retirement. Every month the employer sets aside 6.91% of the gross salary of the employee; every year the accumulated stock of the TFR, which is accounted as a book reserve in the balance sheet of the employer, is appreciated according to a CPI-linked formula.
5. Minimum pension is equivalent to a 1997's monthly minimum wage updated in accordance with inflation.
6. The average monthly wage in Poland is PLN 2 869.69 (USD 1 025) before tax and social security contributions. The net wage is around 70% of the gross.
7. Contribution rates and information on rates of contracting out were obtained from the Department for Work and Pensions' report entitled *Employers' Pension Provision Survey 2005*.

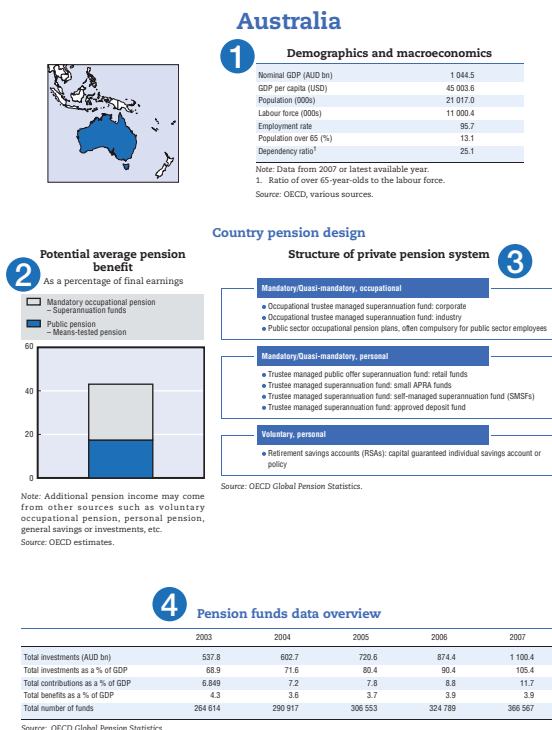
# How to Read the Country Profiles

This section provides country profiles, describing private pension arrangements in individual OECD countries. Each pension country profile is divided into six main sections:

- Demographics and macroeconomics
- Country pension design
- Pension funds data overview
- Private pension system's key characteristics
- Reference information
- Overview of private pension system by type of plan and financing vehicle

The figure below shows how the first three sections are organised on the first page of each country profile.

5. AUSTRALIA



158

PRIVATE PENSIONS OUTLOOK 2008 – ISBN 978-92-64-04438-8 – © OECD 2009

## Demographics and macroeconomics

**1** The first section presents a selection of key demographics and macroeconomics indicators that provide a sense of the size of the country and its economy. GDP figures are from the *OECD Reference*

*Series database*. Population figures are from the *OECD Population and Labour Force database*.

## Country pension design

This section is split into two parts:

### 2 Potential average pension benefit

This figure displays a broad estimate of the total pension income which an average-earning individual may receive from various sources (state, mandatory, and voluntary occupational pensions) after a full working lifetime. It is expressed as a percentage of the earnings the pensioner had just before retirement. These figures draw and expand on a microeconomic approach used in the publication *Pensions at a Glance*, looking at future individual pension entitlements under 2004 parameters and rules.

The pension incomes projected here, however, should be considered only as broad indications of what may happen, as they are conditional on a number of assumptions. It is assumed that individuals are covered by public pension plans throughout their careers. For the countries where occupational pension plans are common, average-earning individuals are assumed to be covered throughout their careers by occupational pension plans that are typical of market practice in that country. In countries where private pension accounts are compulsory, they are assumed to have participated in the compulsory system throughout their careers. Those with shorter, or periodically interrupted, careers should expect lower benefits than those which are set out in this figure.

A public pension can be an earnings-related pension (a pension computed by reference to a rate of emoluments, whether actual emoluments or not and whether final or average emoluments), a flat rate pension (a pension payable at a rate fixed otherwise than by reference to a rate of emoluments or to the rate of another pension), a minimum pension (the minimum level of pension benefits the plan pays out in all circumstances), a basic state pension (a non-earnings related pension paid by the State to

individuals with a minimum number of service years), or a means-tested pension (pension granted to a person after examination of his/her financial state).

Data cover public pensions and other mandatory or quasi-mandatory private pension plans. Voluntary plans are also included if they cover at least 30% of the working population. Additional pension income may come from other sources, such as individual savings, but these are not included in the data.

For five countries, several projections are presented as private pension systems are in a particular state of change.

### 3 Structure of private pension systems

The second part displays a bulleted list summarising the structure of private pension systems according to the pension plans currently in place in the country.

## Pension funds data overview

4 The third section presents selected pension fund indicators from 2003 to 2007 from the *OECD Global Pension Statistics* project ([www.oecd.org/daf/pensions/gps](http://www.oecd.org/daf/pensions/gps)). For further data and analysis, readers can refer to Chapter 2 of this publication.

## Private pension system's key characteristics

The information provided in this section covers eight private pension system key characteristics:

- Overview
- Coverage
- Typical plan design
- Contributions
- Benefits
- Fees
- Taxation
- Market information

Depending on data availability, these characteristics are developed for each existing category of pension plan (mandatory vs. voluntary pension plan, occupational vs. personal pension plan). Information provided in this section refers to December 2007 or to the latest available year.

## Reference information

This section includes references to key legislation reforms, provides the name of regulatory and supervisory authorities and displays official statistical references and sources on private pensions.

## Overview of private pension systems by type of plan and financing vehicle

This last section gives a detailed description of the various private pension plans found in each country as well as the statistical data coverage of the *OECD Global Pension Statistics*.

The following figure gives an example of such an overview. The first two columns provide the name and the description of each pension plan. Pension plans included in the *OECD GPS database* are marked with a tick in the next column, excluding OECD estimates. Under the column headings “Type of plan” and “Financing vehicle” are given the correspondence of each pension plan with the OECD Classification by funding vehicle and by type (see OECD (2005), *Private Pensions: OECD Classification and Glossary*, OECD, Paris).

**Overview of private pension system by type of plan and financing vehicle**

	Included in OECD GPS database	Type of plan				Financing vehicle			
		Voluntary	Mandatory/Quasi-mandatory	Occupational	Personal	Pension fund	Book reserve	Pension insurance contract	Banks or investment companies
Occupational trustee managed superannuation fund: corporate	✓		✓	✓		✓			
Occupational trustee managed superannuation fund: industry	✓		✓	✓		✓			
Trustee managed public offer superannuation fund: retail funds	✓		✓		✓	✓			
Trustee managed superannuation fund: small APRA funds	✓		✓		✓	✓			
Retirement savings accounts (RSAs): capital guaranteed individual savings account or policy		✓			✓			✓	✓

Source: OECD Global Pension Statistics.

## Acronyms, Symbols and Conventional Signs

<b>AFP</b>	Contractual Early Retirement Plan
<b>AGIRC</b>	<i>Association Générale des Institutions de Retraite des Cadres</i>
<b>ALM</b>	Asset Liability Management
<b>APRA</b>	Australian Prudential Regulation Authority
<b>ARRCO</b>	<i>Association des Régimes de Retraites Complémentaires</i>
<b>ASSEP</b>	<i>Association d'Épargne Pension</i>
<b>AVC</b>	Additional Voluntary Contributions
<b>CBFA</b>	<i>Commission Bancaire, Financière et des Assurances</i>
<b>CEE</b>	Central and Eastern Europe
<b>CONSAR</b>	National Commission for the Retirement Savings System
<b>CPP</b>	Canadian Pension Plan
<b>CSSF</b>	<i>Commission de Surveillance du Secteur Financier</i>
<b>DB</b>	Defined Benefit
<b>DBO</b>	Defined Benefit Obligation
<b>DC</b>	Defined Contribution
<b>TyEL</b>	Earnings-related provisions for private-sector workers
<b>EEA</b>	European Economic Area
<b>EET</b>	Exempt-Exempt-tax
<b>EPI</b>	Employee Pension Insurance
<b>EPF</b>	Employees' Pension Fund
<b>FMA</b>	Financial Market Authority
<b>GDP</b>	Gross Domestic Product
<b>GPS</b>	Global Pension Statistics
<b>HMRC</b>	HM Revenue and Customs
<b>IBA</b>	Income Base Amount
<b>IKE</b>	Individual Retirement Account
<b>IRA</b>	Individual Retirement Account
<b>ITP</b>	Collectively bargained pension plan for white-collar employees
<b>KNF</b>	Polish Financial Supervisory Authority
<b>LDI</b>	Liability-Driven Investment
<b>LO</b>	Confederation of Trade Unions
<b>MO</b>	Mandatory Occupational
<b>MP</b>	Mandatory Personal
<b>NHO</b>	Confederation of Norwegian Business and Industry
<b>OFE</b>	Open Pension Fund
<b>PAMC</b>	Pension Asset Management Company
<b>PAYG</b>	Pay-as-you-go



<b>PEE</b>	<i>Plan Épargne Entreprise</i>
<b>PERCO</b>	<i>Plan d'Épargne pour la Retraite Collectif</i>
<b>PERP</b>	<i>Plan d'Épargne Retraite Populaire</i>
<b>PIP</b>	Personal pension plan set up through life insurance contract
<b>PPE</b>	Employee Pension Fund
<b>PPM</b>	Premium Pension Authority
<b>PPRF</b>	Public Pension Reserve Fund
<b>PRSA</b>	Personal Retirement Savings Account
<b>QMO</b>	Quasi-Mandatory Occupational
<b>RAC</b>	Retirement Annuity Contract
<b>S2P</b>	State Second Pension
<b>SAF</b>	Swedish Employers' Confederation
<b>SEPCAV</b>	<i>Société d'Épargne Pension à Capital Variable</i>
<b>SPS</b>	Severance Pay System
<b>SIMPLE</b>	Savings Incentive Match Plan for Employees
<b>SNA</b>	System of National Account
<b>SPMC</b>	Supplementary Pension Management Company
<b>SSRF</b>	Social Security Reserve Fund
<b>SWF</b>	Sovereign Wealth Fund
<b>TFR</b>	<i>Trattamento di Fine Rapporto</i>
<b>TQPP</b>	Tax Qualified Pension Plan
<b>UK</b>	United Kingdom
<b>US</b>	United States of America
<b>VO</b>	Voluntary Occupational
<b>VP</b>	Voluntary Personal

## Symbols

000s	Thousands	JPY	Yen
m	Million	KRW	South Korean won
bn	Billion	MXN	Mexican peso
AUD	Australian dollar	NZD	New Zealand dollar
EUR	Euro	NOK	Norwegian krone
USD	United States dollar	PLN	Zloty
CAD	Canadian dollar	SKK	Slovak koruna
CZK	Czech koruna	SEK	Swedish krona
DKK	Danish krone	CHF	Swiss franc
HUF	Forint	TRY	New Turkish Lira
ISK	Icelandic krona	GBP	British pound

## Conventional signs

n.a.: not applicable

n.d. / ..: not available

## Country ISO code

Australia	AUS	Korea	KOR
Austria	AUT	Luxembourg	LUX
Belgium	BEL	Mexico	MEX
Canada	CAN	Netherlands	NLD
Czech Republic	CZE	New Zealand	NZL
Denmark	DNK	Norway	NOR
Finland	FIN	Poland	POL
France	FRA	Portugal	PRT
Germany	DEU	Slovak Republic	SVK
Greece	GRC	Spain	ESP
Hungary	HUN	Sweden	SWE
Iceland	ISL	Switzerland	CHE
Ireland	IRL	Turkey	TUR
Italy	ITA	United Kingdom	GBR
Japan	JPN	United States	USA



## Glossary

Most of the definitions below draw on the publication *Private Pensions: OECD Classification and Glossary*. It can be downloaded at the following address: [www.oecd.org/dataoecd/0/49/38356329.pdf](http://www.oecd.org/dataoecd/0/49/38356329.pdf).

Term	Definition
Active member	A pension plan member who is making contributions (and/or on behalf of whom contributions are being made) and is accumulating assets or has accrued assets in the past and is not yet retired.
Annuity	A form of financial contract mostly sold by life insurance companies that guarantees a fixed or variable payment of income benefit (monthly, quarterly, half-yearly, or yearly) for the life of a person (the annuitant) or for a specified period of time. It is different from a life insurance contract which provides income to the beneficiary after the death of the insured. An annuity may be bought through instalments or as a single lump sum. Benefits may start immediately or at a pre-defined time in the future or at a specific age.
Asset allocation	The spread of fund investments among different investment forms.
Asset manager	The individual(s) or entity(ies) endowed with the responsibility to physically invest the pension fund assets. Asset managers may also set out the investment strategy for a pension fund.
Basic state pension	A non-earning related pension paid by the State to individuals with a minimum number of service years.
Beneficiary	An individual who is entitled to a benefit (including the plan member and dependants).
Benefit	Payment made to a pension fund member (or dependants) after retirement.
Book reserved pension plans	Sums entered in the balance sheet of the plan sponsor as reserves or provisions for occupational pension plan benefits. Some assets may be held in separate accounts for the purpose of financing benefits, but are not legally or contractually pension plan assets. Most OECD countries do not allow this method of financing. Those that do usually require these plans to be insured against bankruptcy of the plan sponsor through insolvency guaranty arrangement.
Closed pension funds	Funds that support only pension plans that are limited to certain employees ( <i>e.g.</i> those of an employer or group of employers).
Contribution	A payment made to a pension plan by a plan sponsor or a plan member.
Contribution rate	The amount (typically expressed as a percentage of the contribution base) that is needed to be paid into the pension fund.
Deferred member	A pension plan member that no longer contributes to or accrues benefits from the plan but has not yet begun to receive retirement benefits from that plan.
Deferred pension	A pension arrangement in which a portion of an employee's income is paid out at a date after which that income is actually earned.
Deferred retirement	A situation when an individual decides to retire later and draw the pension benefits later than their normal retirement age.
Defined benefit (DB) occupational pension plans	Occupational plans other than defined contribution plans. DB plans generally can be classified into one of three main types, "traditional", "mixed" and "hybrid" plans.
"Traditional" DB plan	A DB plan where benefits are linked through a formula to the members' wages or salaries, length of employment, or other factors.

Term	Definition
"Hybrid" DB plan	A DB plan where benefits depend on a rate of return credited to contributions, where this rate of return is either specified in the plan rules, independently of the actual return on any supporting assets ( <i>e.g.</i> fixed, indexed to a market benchmark, tied to salary or profit growth, etc.), or is calculated with reference to the actual return of any supporting assets and a minimum return guarantee specified in the plan rules.
"Mixed" DB plan	A DB plan that have two separate DB and DC components but which are treated as part of the same plan.
Defined contribution (DC) occupational pension plans	Occupational pension plans under which the plan sponsor pays fixed contributions and has no legal or constructive obligation to pay further contributions to an ongoing plan in the event of unfavourable plan experience.
Dependant	An individual who is financially dependent on a (passive or active) member of a pension scheme.
Dependency ratio	Typically defined as the ratio of non-active age to those of active age in a given population.
Final average earnings	The fund member's earnings that are used to calculate the pension benefit in a defined benefit plan; it is typically the earnings of the last few years prior to retirement.
Fund member	An individual who is either an active (working or contributing, and hence actively accumulating assets) or passive (retired, and hence receiving benefits), or deferred (holding deferred benefits) participant in a pension plan.
Funded pension plans	Occupational or personal pension plans that accumulate dedicated assets to cover the plan's liabilities.
Funding	The act of accumulating assets in order to finance the pension plan.
Funding level	The relative value of a scheme's assets and liabilities, usually expressed as a percentage figure.
Funding rules	Regulation that requires the maintenance of a certain level of assets in a pension fund in relation to pension plan liabilities.
Gross rate of return	The rate of return of an asset or portfolio over a specified time period, prior to discounting any fees of commissions.
Group pension funds	Multi-employer pension funds that pool the assets of pension plans established for related employers.
Industry pension funds	Funds that pool the assets of pension plans established for unrelated employers who are involved in the same trade or business.
Mandatory contribution	The level of contribution the member (or an entity on behalf of the member) is required to pay according to scheme rules.
Mandatory occupational plans	Participation in these plans is mandatory for employers. Employers are obliged by law to participate in a pension plan. Employers must set up (and make contributions to) occupational pension plans which employees will normally be required to join. Where employers are obliged to offer an occupational pension plan, but the employees' membership is on a voluntary basis, these plans are also considered mandatory.
Mandatory personal plans	These are personal plans that individuals must join or which are eligible to receive mandatory pension contributions. Individuals may be required to make pension contributions to a pension plan of their choice normally within a certain range of choices or to a specific pension plan.
Minimum pension	The minimum level of pension benefits the plan pays out in all circumstances.
Multi-employer pension funds	Funds that pool the assets of pension plans established by various plan sponsors. There are three types of multi-employer pension funds: <i>a)</i> for related employers <i>i.e.</i> companies that are financially connected or owned by a single holding group (group pension funds); <i>b)</i> for unrelated employers who are involved in the same trade or business (industry pension funds); <i>c)</i> for unrelated employers that may be in different trades or businesses (collective pension funds).
Net rate of return	The rate of return of an asset or portfolio over a specified time period, after discounting any fees of commissions.
Normal pension age	Age from which the individual is eligible for pension benefits.
Occupational pension plans	Access to such plans is linked to an employment or professional relationship between the plan member and the entity that establishes the plan (the plan sponsor). Occupational plans may be established by employers or groups thereof ( <i>e.g.</i> industry associations) and labour or professional associations, jointly or separately. The plan may be administered directly by the plan sponsor or by an independent entity (a pension fund or a financial institution acting as pension provider). In the latter case, the plan sponsor may still have oversight responsibilities over the operation of the plan.
Open pension funds	Funds that support at least one plan with no restriction on membership.

Term	Definition
Overfunding	The situation when the value of a plan's assets are more than its liabilities, thereby having an actuarial surplus.
Pension assets	All forms of investment with a value associated to a pension plan.
Pension funds	The pool of assets forming an independent legal entity that are bought with the contributions to a pension plan for the exclusive purpose of financing pension plan benefits. The plan/fund members have a legal or beneficial right or some other contractual claim against the assets of the pension fund. Pension funds take the form of either a special purpose entity with legal personality (such as a trust, foundation, or corporate entity) or a legally separated fund without legal personality managed by a dedicated provider (pension fund management company) or other financial institution on behalf of the plan/fund members.
Pension insurance contracts	Insurance contracts that specify pension plans contributions to an insurance undertaking in exchange for which the pension plan benefits will be paid when the members reach a specified retirement age or on earlier exit of members from the plan. Most countries limit the integration of pension plans only into pension funds, as the financial vehicle of the pension plan. Other countries also consider the pension insurance contract as the financial vehicle for pension plans.
Pension plan	A legally binding contract having an explicit retirement objective (or in order to satisfy tax related conditions or contract provisions the benefits cannot be paid at all or without a significant penalty unless the beneficiary is older than a legally defined retirement age). This contract may be part of a broader employment contract, it may be set forth in the plan rules or documents, or it may be required by law. In addition to having an explicit retirement objective, pension plans may offer additional benefits, such as disability, sickness, and survivors' benefits.
Pension plan sponsor	An institution ( <i>e.g.</i> company, industry/ employment association) that designs, negotiates, and normally helps to administer an occupational pension plan for its employees or members.
Personal pension plans	Access to these plans does not have to be linked to an employment relationship. The plans are established and administered directly by a pension fund or a financial institution acting as pension provider without any intervention of employers. Individuals independently purchase and select material aspects of the arrangements. The employer may nonetheless make contributions to personal pension plans. Some personal plans may have restricted membership.
Private pension funds	A pension fund that is regulated under private sector law.
Private pension plans	A pension plan administered by an institution other than general government. Private pension plans may be administered directly by a private sector employer acting as the plan sponsor, a private pension fund or a private sector provider. Private pension plans may complement or substitute for public pension plans. In some countries, these may include plans for public sector workers.
Projected Benefit Obligation (PBO)	The actuarial present value of vested and non-vested benefits attributed to the plan through the pension benefit formula for service rendered to that date based on employees' future salary levels.
Protected pension plan	A plan (personal pension plan or occupational defined contribution pension plan) other than an unprotected pension plan. The guarantees or promises may be offered by the pension plan/fund itself or the plan provider ( <i>e.g.</i> deferred annuity, guaranteed rate of return).
Public pension funds	Pension funds that are regulated under public sector law.
Public pension plans	Social security and similar statutory programmes administered by the general government (that is central, state, and local governments, as well as other public sector bodies such as social security institutions). Public pension plans have been traditionally PAYG financed, but some OECD countries have partial funding of public pension liabilities or have replaced these plans by private pension plans.
Rate of return	The income earned by holding an asset over a specified period.
Replacement rate	The ratio of an individual's (or a given population's) (average) pension in a given time period and the (average) income in a given time period.
Separate accounts	A pension fund that is legally segregated from both the plan sponsor and a financial institution that acts as the manager of the fund on behalf of the plan member.
Single employer pension funds	Funds that pool the assets of pension plans established by a single sponsor.
Trust	A legal scheme, whereby named people (termed trustees) hold property on behalf of other people (termed beneficiaries).
Trustee	A person or a company appointed to carry out the tasks of the trust.
Underfunding	The situation when the value of a plan's assets are less than its liabilities, thereby having an actuarial deficiency.

---

Term	Definition
Unfunded pension plans	Plans that are financed directly from contributions from the plan sponsor or provider and/or the plan participant. Unfunded pension plans are said to be paid on a current disbursement method (also known as the pay as you go, PAYG, method). Unfunded plans may still have associated reserves to cover immediate expenses or smooth contributions within given time periods. Most OECD countries do not allow unfunded private pension plans.
Unprotected pension plan	A plan (personal pension plan or occupational defined contribution pension plan) where the pension plan/fund itself or the pension provider does not offer any investment return or benefit guarantees or promises covering the whole plan fund.
Voluntary contribution	An extra contribution paid in addition to the mandatory contribution a member can pay to the pension fund in order to increase the future pension benefits.
Voluntary occupational pension plans	The establishment of these plans is voluntary for employers (including those in which there is automatic enrolment as part of an employment contract or where the law requires employees to join plans set up on a voluntary basis by their employers). In some countries, employers can, on a voluntary basis, establish occupational plans that provide benefits that replace at least partly those of the social security system. These plans are classified as voluntary, even though employers must continue sponsoring these plans in order to be exempted (at least partly) from social security contributions.
Voluntary personal pension plans	Participation in these plans is voluntary for individuals. By law individuals are not obliged to participate in a pension plan. They are not required to make pension contributions to a pension plan. Voluntary personal plans include those plans that individuals must join if they choose to replace part of their social security benefits with those from personal pension plans.

---

## Table of Contents

<b>Special Feature: Private Pensions and the 2008 Turmoil in Financial Markets</b> . . . . .	15
<b>Introduction</b> . . . . .	25
<b>Reader's Guide</b> . . . . .	31
<b>Acronyms, Symbols and Conventional Signs</b> . . . . .	35
<b>Chapter 1. Role and Types of Private Pension Systems</b> . . . . .	39
1.1. The growing role of funding and private pensions in retirement income arrangements . . . . .	40
1.2. The role of institutional investors in pension systems . . . . .	48
1.3. Types of private pension arrangements across OECD countries . . . . .	50
Notes . . . . .	55
<b>Chapter 2. Key Pension Fund Indicators</b> . . . . .	57
2.1. Pension fund wealth and membership . . . . .	58
2.2. Pension fund industry structure . . . . .	65
2.3. Pension fund investments . . . . .	68
2.4. Investment restrictions and pension fund asset allocation . . . . .	75
2.5. Revenues and expenditure . . . . .	77
2.6. Pension funds in selected non-OECD countries . . . . .	81
2.7. Additional comparative tables, notes and reference series . . . . .	83
Notes . . . . .	100
<b>Chapter 3. Public Pension Reserve Funds</b> . . . . .	101
3.1. Wealth accumulated in public pension reserve funds . . . . .	102
3.2. Asset allocation of public pension reserve funds . . . . .	104
Notes . . . . .	108
<b>Chapter 4. Performance Indicators of Private Pension Systems</b> . . . . .	109
4.1. Coverage . . . . .	110
4.2. Are pension benefits adequate? . . . . .	116
4.3. Investment performance . . . . .	126
4.4. Funding and solvency . . . . .	132
4.5. Private pension operating costs and fees . . . . .	139
Notes . . . . .	150
References . . . . .	152
<b>Chapter 5. Country Profiles</b> . . . . .	155
How to Read the Country Profiles . . . . .	156
Australia . . . . .	158



Austria	163
Belgium	168
Canada	173
Czech Republic	177
Denmark	180
Finland	185
France	189
Germany	195
Greece	201
Hungary	205
Iceland	210
Ireland	214
Italy	220
Japan	225
Korea	229
Luxembourg	233
Mexico	238
Netherlands	243
New Zealand	248
Norway	252
Poland	257
Portugal	263
Slovak Republic	268
Spain	273
Sweden	278
Switzerland	283
Turkey	287
United Kingdom	292
United States	297
Notes	303
<b>Glossary</b>	305
<b>List of boxes</b>	
1.1. Definitions	43
3.1. Categories of public pension reserve funds.	104
4.1. A brief guide to OECD pension models.	119
<b>List of tables</b>	
1.1. Types of private pension plans in OECD countries	41
1.2. Total private pension assets in major OECD countries, 2007	43
2.1. Total number of pension funds in selected OECD countries, 2007	67
2.2. Changes in bonds and equities indexes between 2001 and 2007 in selected areas	71
2.3. Foreign investment and foreign currency investment of pension funds in selected OECD countries, 2007	72
2.4. Total investment of pension funds in OECD and selected non-OECD countries, 2001-2007	83

2.5.	Total investment of pension funds in OECD and selected non-OECD countries, 2001-2007 .....	85
2.6.	Total investment of pension funds in OECD and selected non-OECD countries, 2001-2007 .....	87
2.7.	Total number of pension funds in selected OECD countries, 2001-2007 .....	89
2.8.	Pension fund portfolio allocation in selected OECD countries, 2007 .....	90
2.9.	Pension fund portfolio allocation in selected OECD countries, 2006 .....	91
2.10.	Pension fund portfolio allocation in selected OECD countries, 2005 .....	92
2.11.	Pension funds' net income in selected OECD countries, 2001-2007 .....	93
2.12.	Pension funds' benefits in selected OECD countries, 2001-2007 .....	94
2.13.	Pension funds' contributions in selected OECD countries, 2001-2007 .....	95
2.14.	Employers' contributions vs. employees' contributions in selected OECD countries, 2001-2007 .....	96
2.15.	List of administrative sources, OECD countries .....	97
2.16.	List of administrative sources, non-OECD countries .....	98
2.17.	Annual gross domestic product, expenditure approach, current prices .....	99
2.18.	Currency exchange rate .....	100
3.1.	Size of public pension reserve fund markets in selected OECD and non-OECD countries, 2007 .....	103
3.2.	Asset allocation information of public pension reserve funds, 2007 .....	106
3.3.	Changes in public pension reserve fund allocations to equities and bonds in selected OECD and non-OECD countries, 2001 vs. 2007 .....	107
4.1.	Gross replacement rate and coverage in public and private pension systems in selected OECD and non-OECD countries .....	111
4.2.	Assumptions used for retirement income projections under the Base-Case Scenario .....	120
4.3.	Basic statistical information on real investment returns by country .....	128
4.4.	Countries pension funds' returns net of benchmark returns .....	131
4.5.	Private pensions' fee structure in selected OECD and non-OECD countries, 2007 .....	143
4.6.	Limit on fees in selected OECD and non-OECD countries, 2007 .....	146
4.7.	Average administration fee in selected OECD and non-OECD countries, 2007 .....	147

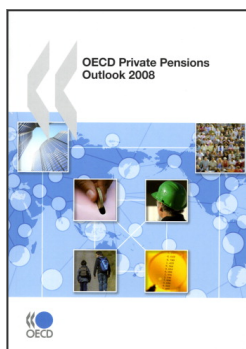
### List of figures

S.1.	Major stock market performance .....	15
S.2.	Nominal and real pension fund returns in selected OECD countries January-October 2008 .....	16
S.3.	Nominal average annual pension fund return in selected OECD countries over the last 5, 10 and 15 years .....	17
R.1.	Private pension plan: Functional perspective .....	32
R.2.	Private pension plan: Institutional perspective .....	32
1.1.	Public and private pension expenditure in selected OECD countries, 2006 .....	42
1.2.	Total private pension assets, 2007 .....	44
1.3.	Private pension assets compared with the public pension system's gross replacement rate, 2007 .....	45

1.4.	Private pension assets in 2007 compared to the difference in average growth rates of private pension assets and GDP over the period 2001-07 in selected OECD countries . . . . .	46
1.5.	Ratio of the inactive elderly population aged 65 and over to the labour force. . . .	47
1.6.	Ratio of public pension reserve funds' assets and public pension expenditure for selected OECD countries, 2006 . . . . .	48
1.7.	Total assets under management within selected financial entities, 2007 . . . .	49
1.8.	Relative share and total assets by type of institutional investors, 1995-2007 . .	49
1.9.	Private pension assets by type of financing vehicle, 2007 . . . . .	51
1.10.	Private pension assets by pension plan type in selected OECD countries, 2007 . . .	53
1.11.	Defined benefit private pension assets for selected OECD countries, 2003-2007 . . . . .	54
2.1.	Geographical distribution of pension fund assets in OECD countries, 2001-2007 . . . . .	58
2.2.	Trends in total OECD pension funds assets, 2001-2007. . . . .	59
2.3.	Pension funds' average annual growth rate in total assets over 2001-2007 in OECD countries . . . . .	59
2.4.	Pension funds' average annual growth rate in total active members over 2001-2007 in selected OECD countries . . . . .	60
2.5.	Importance of pension funds relative to the size of the economy in OECD countries, 2007. . . . .	61
2.6a.	Trends in pension fund assets: OECD countries with mature markets, 2001-2007 . . . . .	62
2.6b.	Trends in pension fund assets: OECD countries with growing markets, 2001-2007 . . . . .	63
2.6c.	Trends in pension fund assets: OECD countries with sluggish markets, 2001-2007 . . . . .	63
2.7.	Pension fund assets as a percentage of stock market capitalisation in OECD countries, 2007 . . . . .	64
2.8.	Defined benefit vs. defined contribution assets in total selected OECD countries, 2003-2007 . . . . .	65
2.9.	Relative shares of defined benefit and defined contribution pension fund assets in selected OECD countries, 2007 . . . . .	66
2.10.	Average size of pension fund (ratio of pension funds' total assets to the number of funds) in selected OECD countries, 2007 . . . . .	67
2.11.	Average size of pension fund member account (ratio of pension funds' total assets to the number of active members) in selected OECD countries, 2007 . . .	68
2.12.	Pension fund asset allocation for selected investment categories in selected OECD countries, 2007 . . . . .	69
2.13.	Variations in bills and bonds allocations between 2001 and 2007 in selected OECD countries . . . . .	70
2.14.	Variations in equities allocations between 2001 and 2007 in selected OECD countries. . . . .	70
2.15.	Assets issued by entities located abroad in selected OECD countries, 2001-2007 . . . . .	73
2.16.	Investment in mutual funds in selected OECD countries, 2007 . . . . .	74

2.17.	Structure of defined benefit and defined contribution asset allocation in pension funds in selected OECD countries, 2007.....	74
2.18.	Portfolio limits on OECD pension funds' investment in equities, 2007.....	75
2.19.	Portfolio limits on OECD pension funds' investment in corporate bonds, 2007	76
2.20.	Portfolio limits on OECD pension funds' foreign investment, 2007.....	77
2.21.	Pension funds' net income for selected OECD countries, 2007 .....	78
2.22.	Pension funds' benefits for selected OECD countries, 2001-2007.....	79
2.23.	Pension funds' contributions for selected OECD countries, 2001-2007.....	79
2.24.	Employers' contributions vs. employees' contributions in selected OECD countries, 2007.....	80
2.25.	Importance of pension funds relative to the size of the economy in selected non-OECD countries, 2007 .....	81
2.26.	Asset allocation to major investment categories in selected non-OECD countries, 2007.....	82
3.1.	2007 Public pension reserve funds' assets and 2001-07 average annual growth rate.....	102
3.2.	Asset allocation of public pension reserve funds in selected OECD and non-OECD countries, 2007 .....	105
3.3.	Foreign investment in public pension reserve funds in selected OECD and non-OECD countries, 2007 .....	108
4.1.	Coverage of voluntary private pension plans by age.....	114
4.2.	Coverage of voluntary private pension plans by income .....	115
4.3.	Potential replacement ratio at normal retirement age: public pension, mandatory private pensions and typical occupational plans .....	121
4.4.	Potential replacement ratios at normal retirement age: base case, higher and lower investment returns scenarios.....	123
4.5.	Potential replacement ratios at normal retirement age: base case, higher and lower salary scale scenarios .....	124
4.6.	Potential replacement ratios at normal retirement age: base case, higher and lower cost of annuitisation scenarios.....	126
4.7.	Average annual returns and their standard deviation, 2000-2005.....	128
4.8.	Number of companies in the sample examined .....	134
4.9.	Companies reporting defined benefit obligations, 2007 .....	135
4.10.	Weight of defined benefit obligation as compared to market capitalisation... ..	136
4.11.	Weight of pension obligation (DBO) compared with market capitalisation in selected OECD and non-OECD countries, 2007.....	137
4.12.	Average percentage over/(under) funding of sampled companies in selected OECD and non-OECD countries, 2007.....	138
4.13.	Total operating costs of pension funds, 2007 .....	140
4.14.	Administrative charges per member in selected OECD and non-OECD countries, 2007 .....	148
4.15.	Administrative charges in selected OECD and non-OECD countries, 2007 ....	148
4.16.	Evolution of total fees since the inception of each system.....	149





**From:**  
**OECD Private Pensions Outlook 2008**

**Access the complete publication at:**  
<https://doi.org/10.1787/9789264044395-en>

**Please cite this chapter as:**

OECD (2009), "Country Profiles: Finland", in *OECD Private Pensions Outlook 2008*, OECD Publishing, Paris.

DOI: <https://doi.org/10.1787/9789264044395-15-en>

This work is published under the responsibility of the Secretary-General of the OECD. The opinions expressed and arguments employed herein do not necessarily reflect the official views of OECD member countries.

This document and any map included herein are without prejudice to the status of or sovereignty over any territory, to the delimitation of international frontiers and boundaries and to the name of any territory, city or area.

You can copy, download or print OECD content for your own use, and you can include excerpts from OECD publications, databases and multimedia products in your own documents, presentations, blogs, websites and teaching materials, provided that suitable acknowledgment of OECD as source and copyright owner is given. All requests for public or commercial use and translation rights should be submitted to [rights@oecd.org](mailto:rights@oecd.org). Requests for permission to photocopy portions of this material for public or commercial use shall be addressed directly to the Copyright Clearance Center (CCC) at [info@copyright.com](mailto:info@copyright.com) or the Centre français d'exploitation du droit de copie (CFC) at [contact@cfcopies.com](mailto:contact@cfcopies.com).