

TOTAL POPULATION

The size and growth of a country's population are both causes and effects of economic and social developments. The pace of population growth has slowed in all OECD countries.

Definition

Data refer to the resident population. For countries with overseas colonies, protectorates or other territorial possessions, their populations are generally excluded. Growth rates are the annual changes in the population resulting from births, deaths and net migration during the year.

The total fertility rate is the total number of children that would be born to each woman if she were to live to the end of her child-bearing years and give birth to children in agreement with the prevailing age-specific fertility rates.

Comparability

For most OECD countries, population data are based on regular, ten-yearly censuses, with estimates for intercensal years derived from administrative data. In several European countries, population estimates are based entirely on administrative records. Population data are fairly comparable.

Overview

In 2007, OECD countries accounted for 18% of the world's population of 6.7 billion. China accounted for 20% and India for 17%. Within OECD, the United States accounted for 25% of the OECD total, followed by Japan (11%), Mexico (9%), Germany (7%) and Turkey (6%).

In the three years to 2007, growth rates above the OECD population average (0.7% per year) were recorded in Iceland, Mexico and Turkey (high birth rate countries) and in Australia, Canada, Luxembourg, Ireland, New Zealand, Norway, Spain and United States (high net immigration). In Hungary and Poland, populations declined due to a combination of low birth rates and net emigration. Growth rates were very low, although still positive, in Japan and the Slovak Republic. The population of OECD countries is expected to grow by less than 0.3 per cent per year until 2050.

Total fertility rates in OECD countries have declined dramatically over the past few decades, falling on average from 2.7 in 1970 to 1.6 children per woman of childbearing age in the 2000s. In all OECD countries, fertility rates declined for young women and increased at older ages. A modest recovery in total fertility rates started in 2002, to an average level of 1.7 in 2008. In 2008, the total fertility rate was below its replacement level of 2.1 in all OECD countries except New Zealand, Iceland, Ireland, Mexico, Turkey and the United States.

For some countries the population figures shown here differ from those used for calculating GDP and other economic statistics on a per capita basis, although differences are normally small.

Population projections are taken from national sources where these are available, but for some countries they are based on UN or Eurostat projections; the projection for the world comes from UN. All population projections require assumptions about future trends in life expectancy, fertility rates and migration. Often, a range of projections is produced using different assumptions about these future trends. The estimates shown here correspond to the median or central variant.

Sources

- For OECD member countries: National Sources, United Nations and Eurostat.
- For Brazil, China, India, Indonesia, Russian Federation and South Africa: UN World population prospects, 1950-2050 (the 2006 revision), United Nations, New York.
- Fertility rates: OECD (2009), *Society at a Glance: OECD Social Indicators – 2009 Edition*, OECD, Paris, (See www.oecd.org/els/social/indicators/SAG).

Further information

Analytical publications

- Bagnoli, P., T. Goeschl and E. Kovacs (2008), *People and Biodiversity Policies: Impacts, Issues and Strategies for Policy Action*, OECD, Paris.
- OECD (2009), *OECD Employment Outlook*, OECD, Paris.

Statistical publications

- Maddison, A. (2003), *The World Economy: Historical Perspectives*, OECD, Paris, also available on CD-ROM, www.theworlddeconomy.org.
- OECD (2009), *Society at a Glance: OECD Social Indicators – 2009 Edition*, OECD, Paris, (See www.oecd.org/els/social/indicators/SAG).

Methodological publications

- d'Addio, A. C. and M. Mira d'Ercole (2005), *Trends and Determinants of Fertility Rates: The Role of Policies*, OECD Social Employment and Migration Working Papers, No. 27, OECD, Paris.
- OECD (2009), *Labour Force Statistics*, OECD, Paris.

Online databases

- *Employment Statistics*.
- *OECD Family database*, (See www.oecd.org/els/social/family/database).
- *World Bank – World Development Indicators*.

Web sites

- *World Population Prospects: The 2008 Revision Population Database*, <http://esa.un.org/unpp>.

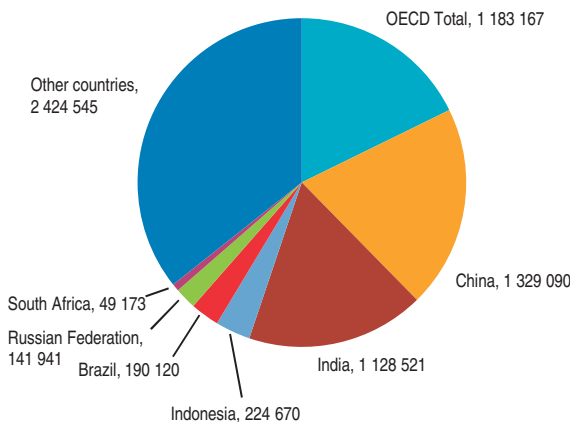


Population levels
Thousands

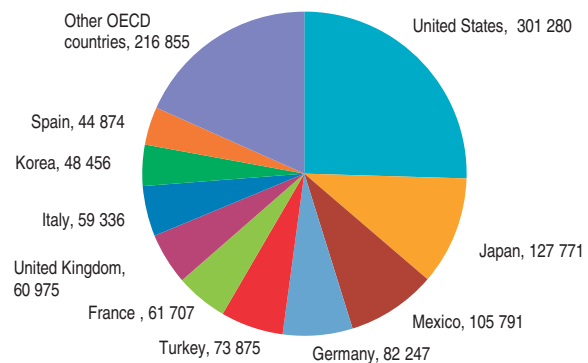
	1996	1997	1998	1999	2000	2001	2002	2003	2004	2005	2006	2007	2020	2050
Australia	18 311	18 518	18 711	18 926	19 153	19 413	19 651	19 895	20 127	20 395	20 698	21 015	23 663	28 081
Austria	7 959	7 968	7 977	7 992	8 012	8 043	8 084	8 118	8 175	8 233	8 282	8 315	8 651	8 986
Belgium	10 157	10 181	10 203	10 226	10 251	10 287	10 333	10 376	10 421	10 479	10 548	10 626	10 801	10 897
Canada	29 611	29 907	30 157	30 404	30 689	31 021	31 373	31 676	31 995	32 312	32 649	32 976	36 344	41 896
Czech Republic	10 315	10 304	10 295	10 283	10 273	10 224	10 201	10 202	10 207	10 234	10 267	10 323	10 287	9 457
Denmark	5 262	5 284	5 301	5 319	5 337	5 355	5 374	5 387	5 401	5 416	5 435	5 457	5 582	5 621
Finland	5 125	5 140	5 153	5 165	5 176	5 188	5 201	5 213	5 228	5 246	5 266	5 289	5 538	5 747
France	58 026	58 207	58 398	58 673	59 049	59 454	59 863	60 264	60 643	60 996	61 353	61 707	65 102	69 993
Germany	81 915	82 035	82 047	82 100	82 212	82 350	82 488	82 534	82 516	82 469	82 376	82 247	82 635	74 422
Greece	10 709	10 777	10 835	10 883	10 917	10 950	10 988	11 024	11 062	11 104	11 149	11 193	11 426	10 605
Hungary	10 311	10 290	10 267	10 238	10 211	10 188	10 159	10 130	10 107	10 087	10 071	10 050	9 856	8 718
Iceland	269	271	274	277	281	285	288	289	293	296	304	311	327	355
Ireland	3 626	3 664	3 703	3 742	3 790	3 847	3 917	3 980	4 045	4 134	4 240	4 339	4 774	5 482
Italy	56 856	56 886	56 902	56 912	56 937	56 972	57 151	57 597	58 167	58 597	58 931	59 336	59 001	55 710
Japan	125 864	126 166	126 486	126 686	126 926	127 291	127 435	127 619	127 687	127 768	127 770	127 771	122 735	95 152
Korea	45 525	45 954	46 287	46 617	47 008	47 357	47 622	47 859	48 039	48 138	48 297	48 456	49 326	42 343
Luxembourg	414	419	425	430	436	442	446	452	458	465	473	480	523	644
Mexico	93 130	94 478	95 790	97 115	98 439	99 716	100 909	102 000	103 002	103 947	104 874	105 791	115 762	121 856
Netherlands	15 531	15 611	15 707	15 812	15 926	16 046	16 149	16 225	16 282	16 320	16 346	16 382	16 762	16 789
New Zealand	3 732	3 781	3 815	3 835	3 858	3 881	3 949	4 027	4 088	4 134	4 185	4 228	4 565	5 046
Norway	4 381	4 405	4 431	4 462	4 491	4 514	4 538	4 565	4 592	4 623	4 661	4 709	5 061	5 854
Poland	38 289	38 292	38 284	38 270	38 258	38 248	38 232	38 195	38 180	38 161	38 132	38 116	37 038	33 576
Portugal	10 058	10 091	10 129	10 172	10 226	10 293	10 368	10 441	10 502	10 549	10 584	10 608	10 501	9 332
Slovak Republic	5 374	5 383	5 391	5 395	5 401	5 380	5 379	5 379	5 383	5 387	5 391	5 398	5 417	4 880
Spain	39 479	39 583	39 722	39 927	40 264	40 721	41 314	42 005	42 692	43 398	44 068	44 874	45 568	42 703
Sweden	8 841	8 846	8 851	8 858	8 872	8 896	8 925	8 958	8 994	9 030	9 081	9 148	9 658	10 490
Switzerland	7 072	7 089	7 110	7 144	7 184	7 230	7 285	7 339	7 390	7 437	7 484	7 550	7 993	8 067
Turkey	62 911	64 063	65 214	66 338	67 393	68 367	69 304	70 231	71 151	72 065	72 971	73 875	84 301	96 498
United Kingdom	58 164	58 314	58 475	58 684	58 886	59 114	59 324	59 557	59 846	60 238	60 587	60 975	66 754	76 959
United States	269 394	272 647	275 854	279 040	282 158	284 915	287 502	289 986	292 806	295 583	298 442	301 280	341 387	439 010
EU27 total	477 367	478 051	478 674	479 562	480 808	482 159	483 825	485 841	487 988	490 103	492 076	494 269	500 487	484 603
OECD total	1 096 611	1 104 556	1 112 194	1 119 926	1 128 050	1 136 184	1 144 135	1 151 981	1 159 853	1 167 527	1 175 228	1 183 167	1 249 678	1 318 459
Brazil	164 157	166 650	169 162	171 675	174 175	176 659	179 123	181 537	183 864	186 075	188 158	190 120	209 051	218 512
Chile	14 631	14 840	15 039	15 231	15 419	15 602	15 780	15 955	16 127	16 297	16 467	16 636	18 639	20 657
China	1 223 083	1 234 764	1 245 993	1 256 729	1 266 954	1 276 684	1 285 984	1 294 940	1 303 667	1 312 253	1 320 724	1 329 090	1 431 155	1 417 045
Estonia	1 418	1 402	1 389	1 379	1 370	1 363	1 357	1 353	1 349	1 347	1 345	1 343	1 333	1 233
India	935 960	954 298	972 746	991 287	1 009 914	1 028 610	1 045 547	1 062 388	1 079 117	1 095 722	1 112 186	1 128 521	1 326 155	..
Indonesia	194 264	197 014	199 760	202 513	205 280	208 064	210 858	213 656	216 443	219 210	221 954	224 670	254 218	288 110
Israel	5 534	5 683	5 821	5 954	6 084	6 211	6 334	6 454	6 573	6 692	6 811	6 932	8 307	10 649
Russian Federation	148 284	148 003	147 648	147 205	146 670	146 042	145 339	144 598	143 864	143 170	142 530	141 941	135 406	116 097
Slovenia	1 972	1 976	1 979	1 982	1 985	1 988	1 991	1 994	1 997	2 001	2 005	2 010	2 053	1 954
South Africa	42 167	42 890	43 562	44 215	44 872	45 536	46 197	46 849	47 477	48 073	48 639	49 173	52 671	56 802
World	5 801 566	5 883 317	5 964 309	6 044 563	6 124 124	6 202 980	6 281 210	6 359 055	6 436 827	6 514 751	6 592 901	6 671 227	7 667 090	9 191 287

StatLink <http://dx.doi.org/10.1787/823560113307>

World population
Thousands, year 2007



OECD population
Thousands, year 2007



StatLink <http://dx.doi.org/10.1787/817451835814>


StatLink <http://dx.doi.org/10.1787/817532305520>

POPULATION AND MIGRATION • POPULATION

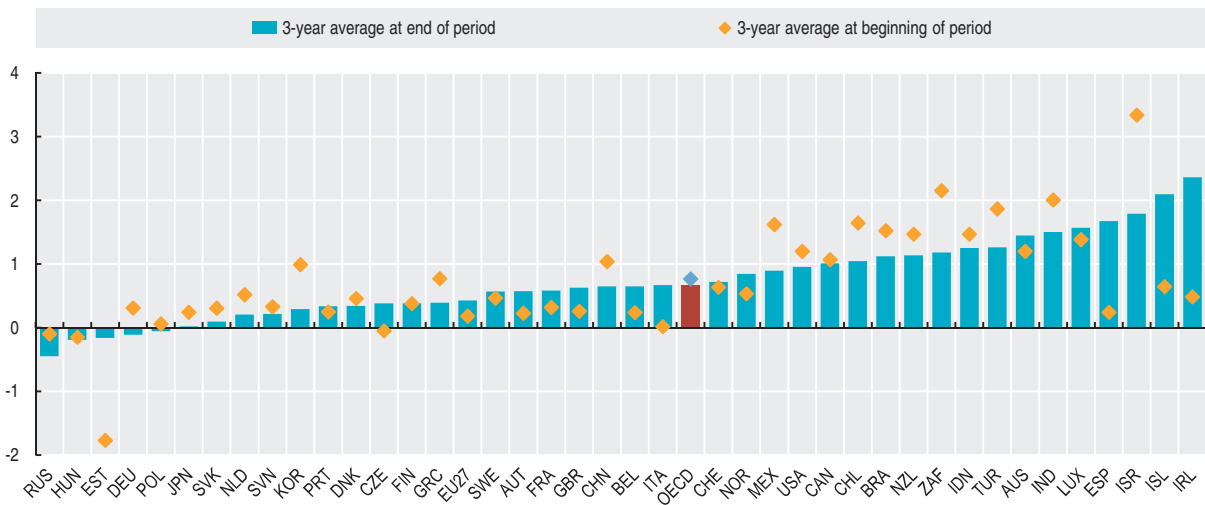
TOTAL POPULATION


Population growth rates Annual growth in percentage

	1994	1995	1996	1997	1998	1999	2000	2001	2002	2003	2004	2005	2006	2007
Australia	1.06	1.22	1.32	1.13	1.05	1.15	1.20	1.36	1.23	1.24	1.17	1.33	1.49	1.53
Austria	0.39	0.15	0.14	0.11	0.11	0.19	0.24	0.39	0.51	0.42	0.70	0.72	0.59	0.40
Belgium	0.31	0.21	0.20	0.24	0.21	0.23	0.24	0.34	0.45	0.42	0.43	0.55	0.66	0.74
Canada	1.11	1.05	1.05	1.00	0.84	0.82	0.94	1.08	1.13	0.97	1.01	0.99	1.04	1.00
Czech Republic	0.05	-0.05	-0.15	-0.11	-0.08	-0.12	-0.10	-0.47	-0.23	0.01	0.05	0.27	0.32	0.55
Denmark	0.30	0.44	0.64	0.43	0.32	0.34	0.34	0.33	0.36	0.24	0.26	0.27	0.34	0.42
Finland	0.43	0.38	0.33	0.30	0.27	0.23	0.21	0.23	0.24	0.24	0.29	0.34	0.38	0.43
France	0.33	0.32	0.31	0.31	0.33	0.47	0.64	0.69	0.69	0.67	0.63	0.58	0.58	0.58
Germany	0.35	0.29	0.29	0.15	0.02	0.06	0.14	0.17	0.17	0.06	-0.02	-0.06	-0.11	-0.16
Greece	0.84	0.77	0.70	0.63	0.54	0.44	0.32	0.30	0.34	0.33	0.35	0.38	0.40	0.40
Hungary	-0.14	-0.14	-0.17	-0.20	-0.23	-0.28	-0.26	-0.23	-0.28	-0.29	-0.22	-0.20	-0.16	-0.21
Iceland	0.84	0.52	0.58	0.74	1.06	1.24	1.43	1.39	0.88	0.60	1.15	1.12	2.86	2.32
Ireland	0.33	0.43	0.69	1.05	1.06	1.04	1.28	1.52	1.82	1.60	1.64	2.19	2.56	2.34
Italy	0.02	0.00	0.03	0.05	0.03	0.02	0.04	0.06	0.31	0.78	0.99	0.74	0.57	0.69
Japan	0.26	0.24	0.23	0.24	0.25	0.16	0.19	0.29	0.11	0.14	0.05	0.06	0.00	0.00
Korea	1.01	1.01	0.96	0.94	0.72	0.71	0.84	0.74	0.56	0.50	0.38	0.21	0.33	0.33
Luxembourg	1.37	1.42	1.37	1.26	1.25	1.36	1.35	1.20	1.05	1.22	1.43	1.54	1.61	1.56
Mexico	1.71	1.62	1.53	1.45	1.39	1.38	1.36	1.30	1.20	1.08	0.98	0.92	0.89	0.87
Netherlands	0.60	0.50	0.46	0.52	0.62	0.67	0.72	0.76	0.64	0.47	0.35	0.23	0.16	0.22
New Zealand	1.34	1.47	1.60	1.32	0.89	0.53	0.59	0.59	1.75	1.99	1.50	1.14	1.23	1.04
Norway	0.57	0.52	0.51	0.54	0.60	0.69	0.65	0.51	0.54	0.59	0.59	0.68	0.81	1.04
Poland	0.08	0.06	0.04	0.01	-0.02	-0.04	-0.03	-0.03	-0.04	-0.10	-0.04	-0.05	-0.08	-0.04
Portugal	0.22	0.26	0.27	0.33	0.38	0.42	0.53	0.66	0.73	0.70	0.58	0.45	0.33	0.23
Slovak Republic	0.43	0.30	0.19	0.18	0.14	0.08	0.10	-0.39	-0.02	0.00	0.07	0.09	0.07	0.12
Spain	0.27	0.23	0.23	0.26	0.35	0.52	0.84	1.14	1.46	1.67	1.64	1.65	1.54	1.83
Sweden	0.71	0.53	0.16	0.06	0.06	0.08	0.16	0.27	0.33	0.37	0.39	0.40	0.56	0.74
Switzerland	0.80	0.67	0.44	0.24	0.30	0.48	0.56	0.63	0.76	0.74	0.69	0.64	0.63	0.88
Turkey	1.89	1.86	1.85	1.83	1.80	1.72	1.59	1.45	1.37	1.34	1.31	1.28	1.26	1.24
United Kingdom	0.26	0.28	0.24	0.26	0.28	0.36	0.34	0.39	0.36	0.39	0.48	0.66	0.58	0.64
United States	1.23	1.20	1.17	1.21	1.18	1.15	1.12	0.98	0.91	0.86	0.97	0.95	0.97	0.95
EU27 total	0.21	0.18	0.16	0.14	0.13	0.19	0.26	0.28	0.35	0.42	0.44	0.43	0.40	0.45
OECD total	0.79	0.76	0.74	0.72	0.69	0.70	0.73	0.72	0.70	0.69	0.68	0.66	0.66	0.68
Brazil	1.53	1.52	1.52	1.52	1.51	1.49	1.46	1.43	1.39	1.35	1.28	1.20	1.12	1.04
Chile	1.76	1.65	1.53	1.43	1.34	1.28	1.23	1.19	1.14	1.11	1.08	1.06	1.04	1.03
China	1.08	1.04	1.00	0.96	0.91	0.86	0.81	0.77	0.73	0.70	0.67	0.66	0.65	0.63
Estonia	-2.05	-1.80	-1.46	-1.16	-0.90	-0.73	-0.64	-0.55	-0.42	-0.32	-0.24	-0.20	-0.16	-0.13
India	2.03	2.01	1.98	1.96	1.93	1.91	1.88	1.85	1.65	1.61	1.57	1.54	1.50	1.47
Indonesia	1.50	1.47	1.44	1.42	1.39	1.38	1.37	1.36	1.34	1.33	1.30	1.28	1.25	1.22
Israel	3.69	3.35	2.98	2.68	2.44	2.28	2.18	2.09	1.98	1.89	1.84	1.81	1.79	1.77
Russian Federation	-0.05	-0.10	-0.14	-0.19	-0.24	-0.30	-0.36	-0.43	-0.48	-0.51	-0.51	-0.48	-0.45	-0.41
Slovenia	0.39	0.33	0.27	0.22	0.18	0.16	0.15	0.15	0.14	0.15	0.16	0.19	0.21	0.24
South Africa	2.38	2.16	1.92	1.71	1.57	1.50	1.49	1.48	1.45	1.41	1.34	1.26	1.18	1.10
World	1.51	1.48	1.44	1.41	1.38	1.35	1.32	1.29	1.26	1.24	1.22	1.21	1.20	1.19

StatLink  <http://dx.doi.org/10.1787/823587486160>

Population growth rates Average annual growth in percentage



StatLink  <http://dx.doi.org/10.1787/817541454352>

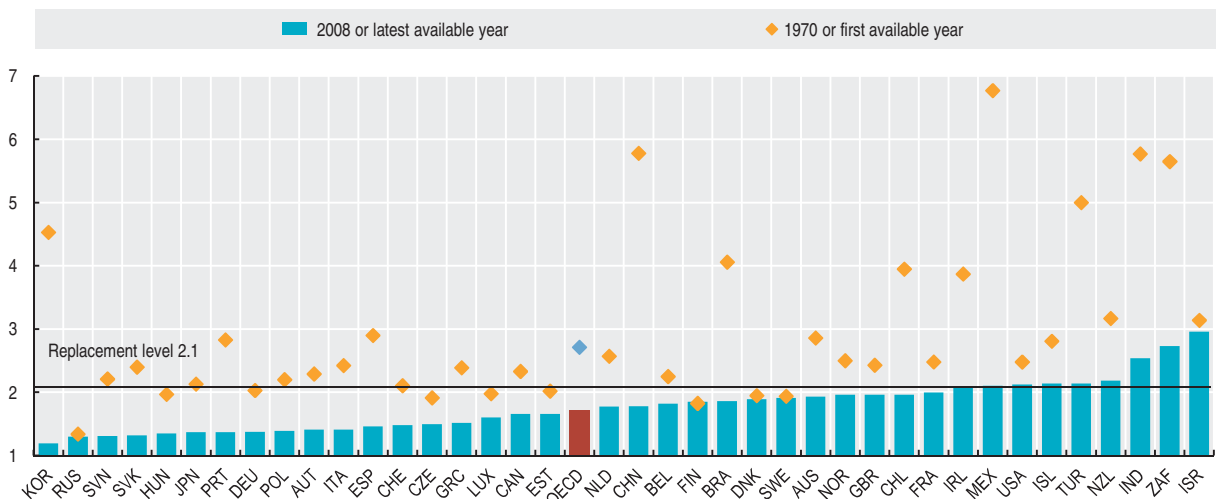


Total fertility rates
Number of children born to women aged 15 to 49

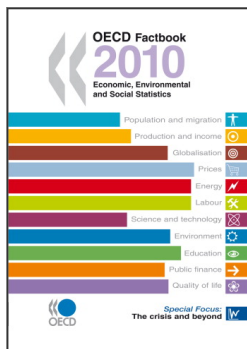
	1970	1996	1997	1998	1999	2000	2001	2002	2003	2004	2005	2006	2007	2008
Australia	2.86	1.80	1.78	1.76	1.76	1.76	1.73	1.76	1.75	1.76	1.79	1.82	1.93	..
Austria	2.29	1.45	1.39	1.37	1.34	1.36	1.33	1.39	1.38	1.42	1.41	1.41	1.38	1.41
Belgium	2.25	1.59	1.61	1.60	1.62	1.72	1.76	1.65	1.72	1.76	1.77	1.80	1.81	1.82
Canada	2.33	1.62	1.58	1.54	1.51	1.49	1.51	1.50	1.53	1.53	1.54	1.59	1.66	..
Czech Republic	1.91	1.19	1.17	1.16	1.13	1.14	1.15	1.17	1.18	1.23	1.28	1.33	1.44	1.50
Denmark	1.95	1.75	1.75	1.72	1.74	1.77	1.75	1.72	1.76	1.78	1.80	1.85	1.85	1.89
Finland	1.83	1.76	1.75	1.71	1.73	1.73	1.73	1.72	1.76	1.80	1.80	1.84	1.83	1.85
France	2.48	1.73	1.73	1.76	1.79	1.87	1.88	1.86	1.87	1.90	1.92	1.98	1.96	2.00
Germany	2.03	1.32	1.37	1.36	1.36	1.38	1.35	1.34	1.34	1.36	1.34	1.33	1.37	1.38
Greece	2.39	1.30	1.31	1.29	1.28	1.27	1.26	1.27	1.29	1.31	1.34	1.41	1.42	1.51
Hungary	1.97	1.46	1.38	1.33	1.29	1.33	1.31	1.31	1.28	1.28	1.32	1.35	1.32	1.35
Iceland	2.81	2.12	2.04	2.05	1.99	2.08	1.95	1.93	1.99	2.03	2.05	2.07	2.09	2.14
Ireland	3.87	1.89	1.94	1.95	1.91	1.90	1.96	1.98	1.98	1.95	1.88	1.90	2.03	2.10
Italy	2.43	1.22	1.23	1.21	1.23	1.26	1.25	1.27	1.29	1.33	1.32	1.35	1.38	1.41
Japan	2.13	1.43	1.39	1.38	1.34	1.36	1.33	1.32	1.29	1.29	1.26	1.32	1.34	1.37
Korea	4.53	1.57	1.52	1.45	1.41	1.47	1.30	1.17	1.18	1.15	1.08	1.12	1.25	1.19
Luxembourg	1.98	1.76	1.71	1.67	1.71	1.78	1.66	1.63	1.62	1.66	1.62	1.64	1.61	1.60
Mexico	6.77	2.84	2.74	2.71	2.73	2.77	2.60	2.46	2.34	2.25	2.20	2.17	2.13	2.10
Netherlands	2.57	1.53	1.56	1.63	1.65	1.72	1.71	1.73	1.75	1.73	1.71	1.72	1.72	1.77
New Zealand	3.17	1.96	1.96	1.89	1.97	1.98	1.97	1.89	1.93	1.98	1.97	2.01	1.97	2.18
Norway	2.50	1.89	1.86	1.81	1.85	1.85	1.78	1.75	1.80	1.83	1.84	1.90	1.90	1.96
Poland	2.20	1.53	1.47	1.41	1.37	1.37	1.32	1.25	1.22	1.23	1.24	1.27	1.31	1.39
Portugal	2.83	1.44	1.47	1.48	1.51	1.56	1.46	1.47	1.44	1.40	1.41	1.36	1.33	1.37
Slovak Republic	2.40	1.47	1.43	1.37	1.33	1.29	1.20	1.19	1.20	1.24	1.25	1.24	1.25	1.32
Spain	2.90	1.16	1.18	1.16	1.19	1.23	1.24	1.26	1.31	1.33	1.35	1.38	1.40	1.46
Sweden	1.94	1.61	1.53	1.51	1.50	1.55	1.57	1.65	1.72	1.75	1.77	1.85	1.88	1.91
Switzerland	2.10	1.50	1.48	1.47	1.48	1.50	1.38	1.39	1.39	1.42	1.42	1.44	1.46	1.48
Turkey	5.00	2.69	2.63	2.56	2.48	2.27	2.25	2.24	2.22	2.23	2.20	2.17	2.15	2.14
United Kingdom	2.43	1.73	1.72	1.71	1.68	1.64	1.63	1.64	1.71	1.77	1.79	1.84	1.90	1.96
United States	2.48	1.98	1.97	2.00	2.01	2.06	2.03	2.01	2.04	2.05	2.05	2.10	2.12	..
OECD average	2.71	1.68	1.65	1.63	1.63	1.65	1.61	1.60	1.61	1.62	1.62	1.65	1.68	1.71
Brazil	..	2.48	2.45	2.43	2.41	2.39	2.34	2.27	2.20	2.13	2.06	1.99	1.93	1.86
Chile	3.95	2.28	2.21	2.17	2.12	2.08	2.04	2.00	1.99	1.98	1.97	1.96
China	5.78	1.91	1.90	1.90	1.89	1.89	1.89	1.88	1.88	1.85	1.81	1.78
Estonia	..	1.37	1.32	1.28	1.32	1.39	1.34	1.37	1.37	1.47	1.50	1.55	1.64	1.66
India	5.77	3.35	3.30	3.22	3.15	3.07	3.00	2.92	2.92	2.68	2.61	2.54
Israel	..	2.94	2.93	2.98	2.94	2.95	2.89	2.89	2.95	2.90	2.84	2.88	2.90	2.96
Russian Federation	..	1.27	1.22	1.23	1.16	1.19	1.22	1.29	1.32	1.34	1.29	1.30
Slovenia	2.21	1.28	1.25	1.23	1.21	1.26	1.21	1.21	1.20	1.25	1.26	1.31	1.31	..
South Africa	5.65	3.04	3.00	2.97	2.93	2.90	2.86	2.84	2.82	2.80	2.78	2.73

StatLink <http://dx.doi.org/10.1787/823625874732>

Total fertility rates
Number of children born to women aged 15 to 49



StatLink <http://dx.doi.org/10.1787/817542708333>



From:
OECD Factbook 2010
Economic, Environmental and Social Statistics

Access the complete publication at:
<https://doi.org/10.1787/factbook-2010-en>

Please cite this chapter as:

OECD (2010), "Total Population", in *OECD Factbook 2010: Economic, Environmental and Social Statistics*, OECD Publishing, Paris.

DOI: <https://doi.org/10.1787/factbook-2010-1-en>

This work is published under the responsibility of the Secretary-General of the OECD. The opinions expressed and arguments employed herein do not necessarily reflect the official views of OECD member countries.

This document and any map included herein are without prejudice to the status of or sovereignty over any territory, to the delimitation of international frontiers and boundaries and to the name of any territory, city or area.

You can copy, download or print OECD content for your own use, and you can include excerpts from OECD publications, databases and multimedia products in your own documents, presentations, blogs, websites and teaching materials, provided that suitable acknowledgment of OECD as source and copyright owner is given. All requests for public or commercial use and translation rights should be submitted to rights@oecd.org. Requests for permission to photocopy portions of this material for public or commercial use shall be addressed directly to the Copyright Clearance Center (CCC) at info@copyright.com or the Centre français d'exploitation du droit de copie (CFC) at contact@cfcopies.com.