

## Methodology

This section provides information on the methodological aspects of the generation of the present *Agricultural Outlook*. It discusses the main aspects in the following order: First, a general description of the agricultural baseline projections and the *Outlook* report is given. Second, the compilation of a consistent set of the assumptions on macroeconomic projections is discussed in more detail. The third part provides reference to the underlying Aglink-Cosimo model. The final part presents the methodology developed for the stochastic analysis conducted with the Aglink-Cosimo model.

### The generation of the OECD-FAO Agricultural Outlook

The projections presented and analysed in this document are the result of a process that brings together information from a large number of sources. The use of a model jointly developed by the OECD and FAO Secretariats, based on the OECD's Aglink model and extended by FAO's Cosimo model, facilitates consistency in this process. A large amount of expert judgement, however, is applied at various stages of the *Outlook* process. The *Agricultural Outlook* presents a single, unified assessment, judged by the OECD and FAO Secretariats to be plausible given the underlying assumptions, the procedure of information exchange outlined below and the information to which they had access.

The starting point of the outlook process is the reply by OECD countries (and some non-member countries) to an annual questionnaire circulated in the fall. Through these questionnaires, the OECD Secretariat obtains information from these countries on future commodity market developments and on the evolution of their agricultural policies. The starting projections for the country modules handled by the FAO Secretariat are developed through model based projections and consultations with FAO commodity specialists. External sources, such as the IMF, the World Bank and the UN, are also used to complete the view of the main economic forces determining market developments. This part of the process is aimed at creating a first insight into possible market developments and at establishing the key assumptions which condition the outlook. The main economic and policy assumptions are summarised in the Overview chapter and in specific commodity tables of the present report. The sources and assumptions for those assumptions are discussed in more detail further below.

As a next step, the modelling framework jointly developed by the OECD and FAO Secretariats is used to facilitate a consistent integration of this information and to derive an initial set of global market projections (baseline). In addition to quantities produced, consumed and traded, the baseline also includes projections for nominal prices (in local currency units) for the commodities concerned. Unless otherwise stated, prices referred to in the text are also in nominal terms. The data series for the projections are drawn from OECD and FAO databases. For the most part, information in these databases has been taken from national statistical sources. Trade data for regions, e.g. the European Union or regional aggregates of developing countries, refer only to extra regional trade. This approach results in a smaller overall trade figure than cumulated national statistics. For further details on particular series, enquiries should be directed to the OECD and FAO Secretariats.

The model provides a comprehensive dynamic economic and policy specific representation of the main temperate-zone commodities as well as rice, cotton and vegetable oils. The Aglink and Cosimo country and regional modules are all developed by the OECD and FAO Secretariats in conjunction with country experts and, in some cases, with assistance from other national administrations. The initial baseline results for the countries under the OECD Secretariat's responsibility are compared with those obtained from the questionnaire replies and issues arising

are discussed in bilateral exchanges with country experts. The initial projections for individual country and regional modules developed by the FAO Secretariat are reviewed by a wider circle of in-house and international experts. In this stage, the global projection picture emerges and refinements are made according to a consensus view of both Secretariats and external advisors. On the basis of these discussions and of updated information, a second baseline is produced. The information generated is used to prepare market assessments for biofuels, cereals, oilseeds, sugar, meats, fish and sea food, dairy products and cotton over the course of the outlook period, which is discussed at the annual meetings of the Group on Commodity Markets of the OECD *Committee for Agriculture*. Following the receipt of comments and final data revisions, a last revision is made to the baseline projections. The revised projections form the basis of a draft of the present *Agricultural Outlook* publication, which is discussed by the *Senior Management Committee* of FAO's Department of Economic and Social Development and the OECD's *Working Party on Agricultural Policies and Markets of the Committee for Agriculture*, in May 2016, prior to publication. In addition, the Outlook will be used as a basis for analysis presented to the FAO's *Committee on Commodity Problems* and its various *Intergovernmental Commodity Groups*.

The Outlook process implies that the baseline projections presented in this report are a combination of projections developed by collaborators for countries under the OECD Secretariat's responsibility and original projections for the 42 countries and regions under the FAO Secretariat's responsibility. The use of a formal modelling framework reconciles inconsistencies between individual country projections and forms a global equilibrium for all commodity markets. The review process ensures that judgement of country experts is brought to bear on the projections and related analyses. However, the final responsibility for the projections and their interpretation rests with the OECD and FAO Secretariats.

### Sources and assumptions for the macroeconomic projections

Population estimates from the 2015 Revision of the United Nations Population Prospects database provide the population data used for all countries and regional aggregates in the Outlook. For the projection period, the medium variant set of estimates was selected for use from the four alternative projection variants (low, medium, high and constant fertility). The UN Population Prospects database was chosen because it represents a comprehensive source of reliable estimates which includes data for non-OECD developing countries. For consistency reasons, the same source is used for both the historical population estimates and the projection data.

The other macroeconomic series used in the Aglink-Cosimo model are real GDP, the GDP deflator, the private consumption expenditure (PCE) deflator, the Brent crude oil price (in US dollars per barrel) and exchange rates expressed as the local currency value of USD 1. Historical data for these series in OECD countries as well as Brazil, Argentina, the People's Republic of China and Russian Federation are consistent with those published in the OECD *Economic Outlook* No.98, November 2015. For other economies, historical macroeconomic data were obtained from the IMF, *World Economic Outlook*, October 2015. Assumptions for 2016-2025 are based on the recent medium term macroeconomic projections of the OECD Economics Department, projections of the OECD *Economic Outlook* No. 97 and projections of the IMF.

The model uses indices for real GDP, consumer prices (PCE deflator) and producer prices (GDP deflator) which are constructed with the base year 2010 value being equal to 1. The assumption of constant real exchange rates implies that a country with higher (lower) inflation relative to the United States (as measured by the US GDP deflator) will have a depreciating (appreciating) currency and therefore an increasing (decreasing) exchange rate over the projection period, since the exchange rate is measured as the local currency value of 1 USD. The calculation of the nominal exchange rate uses the percentage growth of the ratio "country-GDP deflator/US GDP deflator".

The oil price used to generate the Outlook until 2014 is taken from the short term update of the OECD *Economic Outlook* n°98 (November 2015). For 2015, the annual average daily spot price is used, while the average daily spot price for December 2015 is used as the oil price for 2016. Brent crude oil prices from 2017 are projected to grow at the same rate as projected by the *World Energy Outlook* (IEA, November 2015).

### The underlying Aglink-Cosimo model

Aglink-Cosimo is an economic model that analyses supply and demand of world agriculture. It is managed by the Secretariats of the OECD and Food and Agriculture Organization of the United Nations (FAO), and used to generate the *OECD-FAO Agricultural Outlook* and policy scenario analysis.

Aglink-Cosimo is a recursive-dynamic, partial equilibrium model used to simulate developments of annual market balances and prices for the main agricultural commodities produced, consumed and traded worldwide. The Aglink-Cosimo country and regional modules covering the whole world, and projections are developed and maintained by the OECD and FAO Secretariats in conjunction with country experts and national administrations. Several key factors or assumptions are as follows:

- World markets for agricultural commodities are competitive, with buyers and sellers acting as price takers. Market prices are determined through a global or regional equilibrium in supply and demand.
- Domestically produced and traded commodities are viewed to be homogeneous and thus perfect substitutes by buyers and sellers. In particular, importers do not distinguish commodities by country of origin as Aglink-Cosimo is not a spatial model. Imports and exports are nevertheless determined separately. This assumption will affect the results of analysis in which trade is a major driver.
- Aglink-Cosimo is a “partial equilibrium” model for the main agricultural commodities. Non-agricultural markets are not modelled and are treated exogenously to the model. As non-agricultural markets are exogenous, hypotheses concerning the paths of key macroeconomic variables are predetermined with no accounting of feedback from developments in agricultural markets to the economy as a whole.
- Aglink-Cosimo is recursive-dynamic. Thus, each year is modelled over the projection period and depends on the outcome of previous years. Aglink-Cosimo models ten years into the future.

A detailed documentation of Aglink-Cosimo has been produced in 2015 and is available on [www.agri-outlook.org](http://www.agri-outlook.org).

The model used to generate the fish projections is operated as a satellite model to Aglink-Cosimo. Exogenous assumptions are shared and interacting variables, e.g. prices for cross-price reactions, are exchanged. The fish model went through substantial revision in 2016. The aggregated aquaculture supply functions of 32 components of the model were replaced by 117 species specific supply functions with specific elasticity, feed ration and time lag. The main species covered are salmon and trout, shrimp, tilapia, carp, catfish (including *Pangasius*), seabream and seabass, and molluscs. A few other minor productions such as milkfish were also included. The model was constructed in a way to insure consistency between the feed rations and the fishmeal and fish oil markets. Depending on the species, the feed rations can contain a maximum of five types of feed; fishmeal, fish oil, oilseed meals (or substitutes), vegetable oil and low protein feeds like cereals and brans.

### The methodology of stochastic simulations with Aglink-Cosimo

The stochastic analysis can be summarised in three steps.

1. For the yield drivers that are treated stochastically historical deviations around trends are calculated. For macro-economic drivers that are treated stochastically historical deviations around expected values are calculated.
2. From these deviations the stochastic behaviour of the drivers is formalised and 1 000 sets of future alternative values for these drivers, based on their stochastic behaviour, are generated.
3. The Aglink-Cosimo model is simulated for each of the alternative values of the generated drivers.

These steps are explained in more detail below.

**Step (1): Estimating variability based on historical data**

For the macroeconomic variables, deviations from expected values are computed as the ratio of the one-year-ahead forecast to the observed outcome. The forecasts come from past OECD Economic Outlooks and from the International Monetary Fund, and are available from 2003 onwards. This generates a time series of forecast errors from 2004 to 2014. The coefficient of variation (CV) of the errors is given in Table 1.

**Table 1. Macroeconomic variables treated as uncertain and the calculated CV of the one-year-ahead forecast errors (in %)**

	AUS	BRA	CAN	CHN	EUN	IND	JPN	NZL	RUS	USA	WLD
Consumer Price Index (CPI)	2.0	6.9	1.4	4.8	1.7	9.9	1.7	2.6	6.6	1.2	
Gross Domestic Product Deflator (GDP)	3.8	5.6	2.2	10.2	2.4	6.9	2.0	2.5	11.4	2.2	
Gross Domestic Product (GDP)	3.8	5.6	2.2	10.2	2.4	6.9	2.0	2.5	11.4	2.2	
Exchange rate (national currency/USD)	12.6	19.6	8.2	5.2	10.3	13.5	13.6	12.5	11.7		
Crude oil price											32.4

Note: the countries are denoted as follows, (AUS) Australia, (BRA) Brazil, (CAN) Canada, (EUN) European Union, (IND) India, (JPN) Japan, (NZL) New Zealand, (USA) United States, and (WLD) World

Source: OECD and FAO Secretariats.

The deviations around expected yield are measured as the ratio of the estimated yield to the observed outcome, where the estimated yield is obtained by an OLS regression over the period 1996-2013 using the same yield equations as in Aglink-Cosimo.

**Table 2. Commodity yields treated as uncertain and the calculated CV (in %)**

	EU		Eurasia			South America				North America			South East Asia				Others				
	E15	NMS	KAZ	UKR	RUS	ARG	BRA	PRY	URY	CAN	MEX	USA	IND	MYS	THA	VNM	AUS	CHN	IND	NZL	
Wheat																					
Soft	4.4	10.7	21.3	20.6	10.1	8.1	13.4	18.4	25.6	12.8	6.1	7.0	4.1				19.3	2.9	4.1		
Durum	12.4	14.5																			
Coarse grains																					
C. Grains				12.2				15.3	12.8												
Barley	4.9	9.2				16.3				11.5							19.4				
Maize	5.6	19.5				8.3	9.0			9.2	2.1	5.9						3.5			
Oats	5.4	10.0								9.3											
Rye	9.5	9.0																			
Other cereals	6.0	8.3																			
Oilseeds																					
Oilseed			29.2	12.4				11.9													
Rape	7.3	14.0								10.1							21.1				
Soybean	9.4	22.9				12.3	7.7			16.3		6.0									
Sunflower	4.9	11.9			9.1	6.2															
Others																					
Rice	3.5										3.8		5.3		2.7	2.2		1.6	5.3		
Palm oil													7.9								
Sugarbeet	4.6	5.6			8.7						6.3							8.6			
Sugarcane						9.0	2.8				6.1		6.7		10.3		10.3	9.1	6.7		
Dairy																					
Milk																	3.0				5.3

Notes: The following abbreviations are used:

Countries: (E15) EU member states that joined before 2004, (NMS) EU member states that joined after 2004, (KAZ) Kazakhstan, (UKR) Ukraine, (RUS) Russia, (ARG) Argentina, (BRA) Brazil, (PRY) Paraguay, (URY) Uruguay, (CAN) Canada, (MEX) Mexico, (USA) United States, (IND) Indonesia, (MYS) Malaysia, (THA) Thailand, (VNM) Viet Nam, (AUS) Australia, (CHN) China, (IND) India, and (NZL) New Zealand.

Source: OECD and FAO Secretariats.

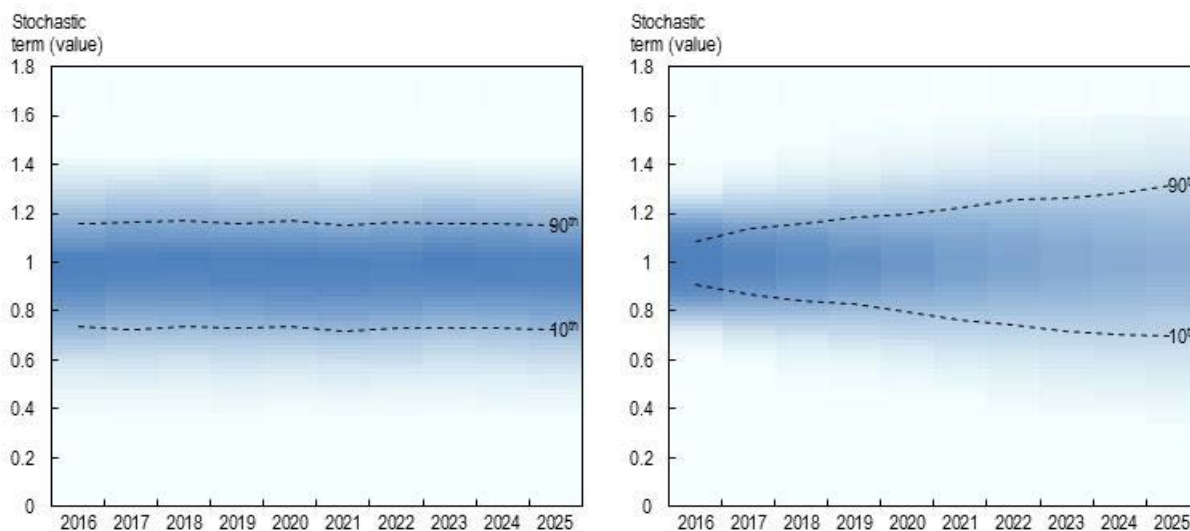
### Step (2): Generating 1 000 sets of alternative values of the stochastic terms that mimic this stochastic behaviour

This step is performed by the software R. Step (2) uses the deviations and errors estimated in step (1), and in step (2) the 1 000 alternative values are generated for each year of the projection period 2015-2024. The assumptions underlying these steps are:

- Deviations and errors are normally distributed; however yield distributions are truncated so that deviations more extreme than that experienced during the period 1996-2013 cannot occur.
- The covariance between stochastic terms is relevant information and estimates of the covariances are calculated from the errors estimated in step (1). It is assumed that the covariances between macroeconomic drivers and yield uncertainties are zero. It is also assumed that the covariances of yield uncertainties in different regional blocks are zero (eg. yields in the European Union and North America have zero covariance).
- For the macroeconomic variables, the stochastic deviation is assumed to increase over time; for the simulation of the crude oil and exchange rate stochastic terms a correction factor of 0.8 is applied. By contrast, yield uncertainty is assumed not to cumulate over time.

The software generates the final stochastic terms run with these underlying assumptions. A comparison of the two panels of Figure 1 illustrates the consequences of these two approaches to simulating the stochastic terms of macroeconomic and yield variables.

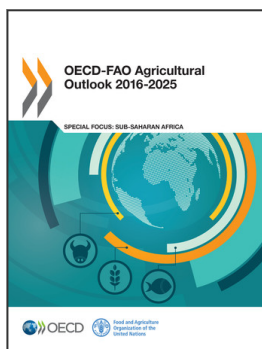
**Figure 1. Distribution of the multiplicative stochastic terms**  
Australian wheat (left figure) and Russian GDP (right figure)



Source: OECD and FAO Secretariats.

### Step (3): Tuning the AGLINK-COSIMO model for each of the 1 000 alternative uncertainty scenarios

The stochastic terms are incorporated as multiplicative factors into the equations in which one of the stochastic drivers appears. This has the effect of shifting the relevant function above or below its “central” position in the deterministic baseline run. The model is run for each of the 1 000 alternative sets of stochastic drivers, providing 1 000 sets of different possible sets of the model’s output variables. For the scenarios presented only 882 simulations were completed, representing a success rate of 88%.



**From:**  
**OECD-FAO Agricultural Outlook 2016-2025**

**Access the complete publication at:**  
[https://doi.org/10.1787/agr\\_outlook-2016-en](https://doi.org/10.1787/agr_outlook-2016-en)

**Please cite this chapter as:**

OECD/Food and Agriculture Organization of the United Nations (2016), "Methodology", in *OECD-FAO Agricultural Outlook 2016-2025*, OECD Publishing, Paris.

DOI: [https://doi.org/10.1787/agr\\_outlook-2016-16-en](https://doi.org/10.1787/agr_outlook-2016-16-en)

This work is published under the responsibility of the Secretary-General of the OECD. The opinions expressed and arguments employed herein do not necessarily reflect the official views of OECD member countries.

This document and any map included herein are without prejudice to the status of or sovereignty over any territory, to the delimitation of international frontiers and boundaries and to the name of any territory, city or area.

You can copy, download or print OECD content for your own use, and you can include excerpts from OECD publications, databases and multimedia products in your own documents, presentations, blogs, websites and teaching materials, provided that suitable acknowledgment of OECD as source and copyright owner is given. All requests for public or commercial use and translation rights should be submitted to [rights@oecd.org](mailto:rights@oecd.org). Requests for permission to photocopy portions of this material for public or commercial use shall be addressed directly to the Copyright Clearance Center (CCC) at [info@copyright.com](mailto:info@copyright.com) or the Centre français d'exploitation du droit de copie (CFC) at [contact@cfcopies.com](mailto:contact@cfcopies.com).