

GOODS TRANSPORT

There is an increasing demand for data on the transport sector to assess its various impacts on the economy, the environment and societies. However comparability of transport data between countries is not always possible worldwide due to the lack of harmonised definitions and methods. The Glossary for Transport Statistics (4th edition) provides common definitions to all member states of the European Union, the International Transport Forum and the United Nations Economic Commission for Europe.

Definition

In the following table, goods transport data refer to the total movement of goods using inland transport modes (rail, road, inland waterways and pipelines) on a given network. Data are expressed in tonne-kilometres which represents the transport of one tonne over one kilometre. The distance to be taken into consideration is the distance actually run.

Comparability

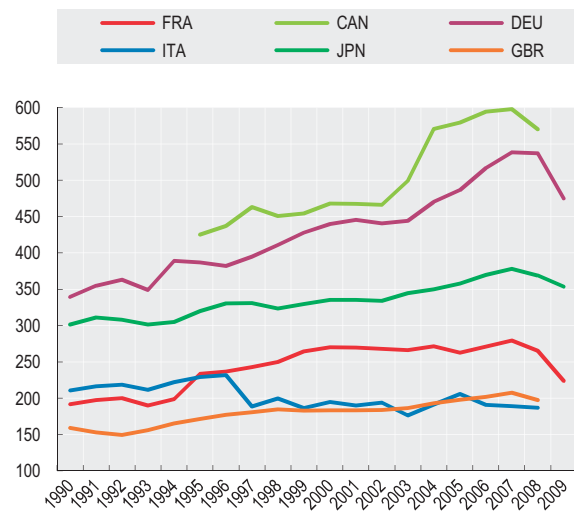
Transport is classified as national if both loading and unloading take place in the same country. If one of them occurs in another country then the transport is considered as international. The statistics on international road transport, based on the nationality concept are different for statistics for other modes that are based on the territoriality concept. Statistics based on the territoriality concept reflect the goods and the vehicles entering or leaving a country irrespective of the nationality of the transporting vehicle. Statistics based on the nationality concept only reflect the performance of the vehicles registered in the reporting country.

Overview

The economic crisis at the end of 2008 and the collapse of world trade in 2009 have had a major impact on freight transport. During 2009, in the European Union goods transported by rail fell by 18% to around 350 billion tonne-kilometres, the lowest level since 1992. In the United States and in the Russian Federation rail freight volumes dropped by 15% and 12% respectively. Road goods transport also suffered in 2009 with an overall drop of 9% in the European Union and of nearly 17% in the Russian Federation. When available, data on inland waterways show a decline in 2009 for almost all countries, with significant drops for the Russian Federation (-17%), Germany (-13%), and the Netherlands (-20%).

Goods transport

Billion tonne-kilometre



StatLink <http://dx.doi.org/10.1787/888932535052>

Sources

- International Transport Forum (ITF) (2011), “Coastal Shipping”, *International Transport Forum* (database).
- ITF (2011), “Container Transport”, *International Transport Forum* (database).
- ITF (2011), “Inland Freight Transport”, *International Transport Forum* (database).

Further information

Analytical publications

- Leunig, T. (2011), “Cart or Horse: Transport and Economic Growth”, *International Transport Forum Discussion Papers*, No. 2011/04.
- OECD (2011), *Environmental Impacts of International Shipping: The Role of Ports*, OECD Publishing.
- OECD (2010), *Globalisation, Transport and the Environment*, OECD Publishing.

Statistical publications

- ITF (2011), *Trends in the Transport Sector 2011*, OECD Publishing.

Methodological publications

- ITF, Statistical Office of the European Communities and United Nations Economic Commission (2010), *Illustrated Glossary for Transport Statistics, 4th Edition*, OECD Publishing.

Websites

- International Transport Forum, www.internationaltransportforum.org.

Goods transport

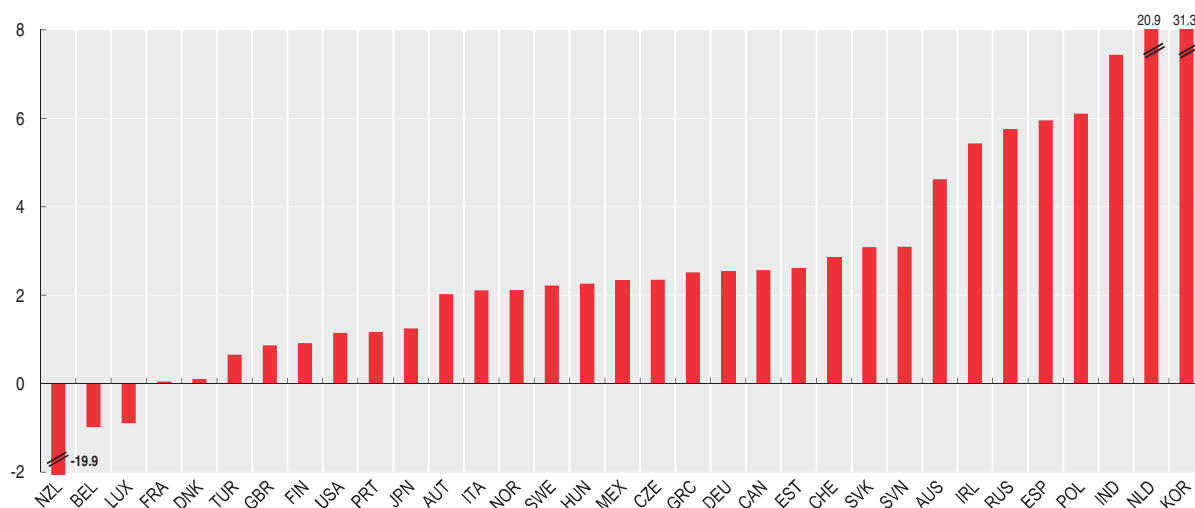
Million tonne-kilometre

	1970	1980	1990	1999	2000	2001	2002	2003	2004	2005	2006	2007	2008	2009
Australia	60 403	113 320	169 550	258 650	268 756	276 275	296 630	311 047	324 947	349 439	362 383	380 893	388 346	393 418
Austria	17 645	27 543	29 730	41 728	43 763	45 079	45 766	45 049	45 690	44 493	49 900	49 842	49 955	43 350
Belgium	27 907	33 965	46 875	62 302	67 634	69 514	70 470	67 655	65 561	62 124	62 149	60 733	57 021	..
Canada	454 100	467 800	467 500	466 200	499 300	570 800	579 200	594 600	598 000	570 300	..
Czech Republic	56 385	58 917	56 508	63 174	64 755	63 413	61 351	69 206	67 422	69 492	60 542
Denmark	9 653	9 470	13 155	16 635	17 715	17 543	18 066	18 151	17 940	18 150	18 251	18 203	16 790	..
Estonia	7 404	10 147	11 489	11 272	12 035	13 234	14 084	16 098	17 325	18 280	19 275	19 090	14 222	12 243
Finland	18 670	26 735	33 827	35 446	37 941	36 635	37 845	37 051	37 553	37 594	36 616	36 498	38 471	33 196
France	174 792	208 403	191 660	264 420	270 351	269 801	267 796	266 155	271 426	262 573	271 213	279 608	265 506	223 941
Germany	212 432	252 735	339 540	428 028	439 698	445 699	440 861	444 320	470 056	486 372	516 835	538 594	536 933	474 856
Greece	7 648	9 973	13 095	14 188	14 717	14 803	15 027	15 156	16 065	16 474	17 172	18 194	17 746	17 345
Hungary	28 441	42 340	39 265	25 163	25 156	25 743	24 940	25 445	27 042	28 191	30 278	31 246	30 771	..
Ireland	545	5 635	5 719	10 801	12 839	12 921	14 874	16 296	17 688	18 455	17 893	19 275	17 393	..
Italy	27 493	150 123	210 745	186 420	194 888	189 990	193 878	176 383	191 176	205 827	191 100	189 164	186 984	..
Japan	198 947	216 329	301 440	329 690	335 254	335 265	334 159	344 656	350 108	357 792	369 726	378 134	368 676	353 263
Korea	..	10 798	13 663	10 072	10 803	101 367	102 778	109 430	111 698	110 977	119 562	116 149	116 788	..
Luxembourg	1 204	1 273	1 428	1 354	1 454	1 486	1 566	1 438	1 503	1 262	1 405	1 219	1 249	1 060
Mexico	65 459	123 577	145 301	245 231	242 386	238 516	244 516	249 332	254 187	276 402	283 118	299 560	301 872	280 785
Netherlands	50 924	59 588	66 496	84 147	83 222	82 944	84 070	82 324	89 359	88 032	87 844	90 703	91 741	..
New Zealand	17 244	18 423	19 166	19 976	20 950	22 048	22 231	22 363	23 086	23 391	..
Norway	4 642	6 909	11 919	18 594	18 277	17 965	18 934	19 237	21 389	21 726	22 596	22 521	22 457	22 124
Poland	124 296	198 723	138 744	145 973	150 565	147 241	150 045	160 305	188 670	196 377	216 938	238 631	248 787	258 858
Portugal	776	12 801	12 510	17 399	17 135	19 312	17 833	16 713	19 727	19 847	20 120	20 960	19 317	16 143
Slovak Republic	30 038	26 958	25 743	25 906	27 520	28 940	32 693	33 038	37 701	39 494	35 347
Slovenia	5 425	7 765	9 096	4 678	4 794	4 764	5 023	5 269	5 416	5 606	5 652	6 175	6 155	4 944
Spain	63 062	103 787	106 358	153 325	168 350	181 126	199 569	206 775	235 014	248 250	256 613	273 827	258 084	224 269
Sweden	15 084	28 273	36 091	44 260	43 775	42 471	44 208	44 289	45 860	48 807	50 349	52 057	53 908	45 545
Switzerland	13 178	16 324	21 360	22 410	24 201	24 899	24 758	25 106	26 360	26 887	28 232	28 286	28 859	26 156
Turkey	24 960	56 349	136 153	216 044	224 581	202 500	205 827	178 959	178 197	181 719	192 916	204 145	229 076	231 892
United Kingdom	112 565	119 178	159 269	182 919	183 438	183 292	183 862	186 394	192 925	197 815	202 042	207 520	197 623	..
United States	227 487	3 470 380	4 028 395	5 157 458	5 165 881	5 186 030	5 302 563	5 379 359	5 588 527	5 649 810	5 729 250	5 718 599	5 712 809	..
India	864 278	907 129	959 237	1 045 631	1 125 053	1 471 673	1 329 178
Russian Federation	2 194 921	3 873 007	4 276 002	2 120 059	2 341 894	2 473 485	2 657 937	2 925 424	3 192 426	3 295 161	3 390 146	3 523 107	3 509 073	3 220 801

StatLink  <http://dx.doi.org/10.1787/888932505127>

Goods transport

Average annual growth rate in percentage, 1999-2009 or latest available period

StatLink  <http://dx.doi.org/10.1787/888932505127>

