

#### **Definition and measurement**

Data on pro- and anti-social behaviour are drawn from the Gallup World Poll. The Gallup World Poll is conducted in over 140 countries around the world based on a common questionnaire, translated into the predominant languages of each country. With few exceptions, all samples are probability based and nationally representative of the resident population aged 15 years and over in the entire country, including rural areas. While this ensures a high degree of comparability across countries, results may be affected by sampling and non-sampling error. Sample sizes vary between around 1 000 and 4 000, depending on the country. Pro-social behaviour averages country responses to three questions about whether the respondent has volunteered time, donated money to a charity and helped a stranger in the last month. Anti-social behaviour averages responses to questions on whether the respondent has had money or property stolen in the last year and been assaulted.

The Gini coefficient is a measure of income inequality. Values range between 0 – perfect equality – and 1 – all income goes to one person.

**Pro-social behaviour is behaviour which contributes to the positive functioning of society, whereas anti-social behaviour is the contrary.**

**High levels of pro-social behaviour were found in five Anglophone countries, all of which were in the top six of the OECD (Panel A, CO3.1).** The Nordic countries, which feature at the top of many social indicators in this publication, were unusually ordinary performers in terms of

pro-social behaviour. Mediterranean and eastern European countries typically had low levels of pro-social behaviour.

**Chile and Mexico, amongst OECD countries, stood out as having high levels of anti-social behaviour (Panel B, CO3.1).** Low levels of anti-social behaviour were found in an eclectic mix of countries – Israel, Japan, Korea and Poland. Again, the Nordics were generally modest performers, with Denmark, Norway and Sweden having levels of anti-social behaviour at or above the OECD average.

**There was no tendency for countries which had high levels of pro-social behaviour to have low levels of anti-social behaviour or vice versa.** For example, Poland was a good performer with low rates of anti-social behaviour. However, it was also in the bottom third of the OECD on pro-social behaviour. New Zealand was a good performer on pro-social behaviour, but was also above the OECD average with anti-social behaviour.

**Higher income countries had more pro-social behaviour (CO3.2).** This income-pro-social relationship was quite strong. The Anglophones had more pro-social behaviour than expected on the basis of their income, as did Mexico. Greece and Japan had much lower pro-social behaviour than would be expected given their incomes.

**On the other hand, there was only a weak positive relationship between income inequality and anti-social behavior (CO3.3).** The weak observed relationship was driven entirely by Mexico, a country with the highest level of anti-social behaviour in the OECD, combined with the highest rate of income inequality. Sweden and the Czech Republic stand out as relatively equal societies, at least in terms of income, with high reported anti-social behaviour.

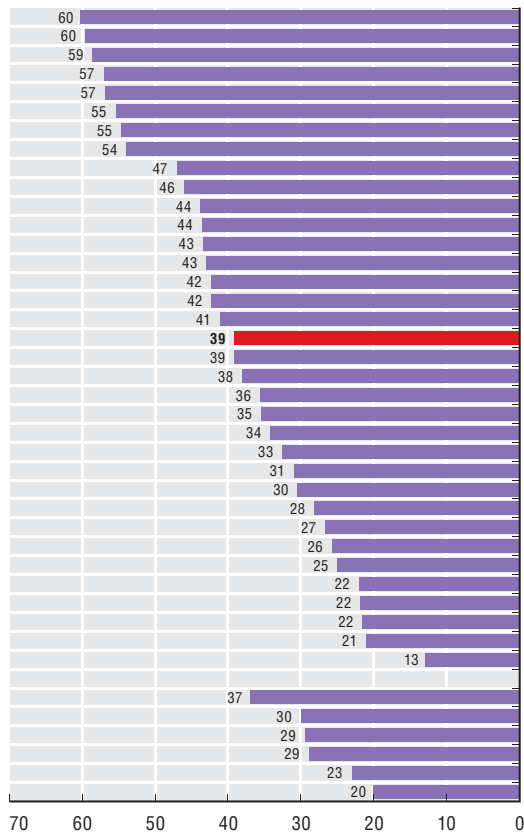
#### **Figure note**

Figure CO3.1: 2006: Switzerland; 2008: Iceland and Norway; 2009: Estonia, Israel and South Africa.

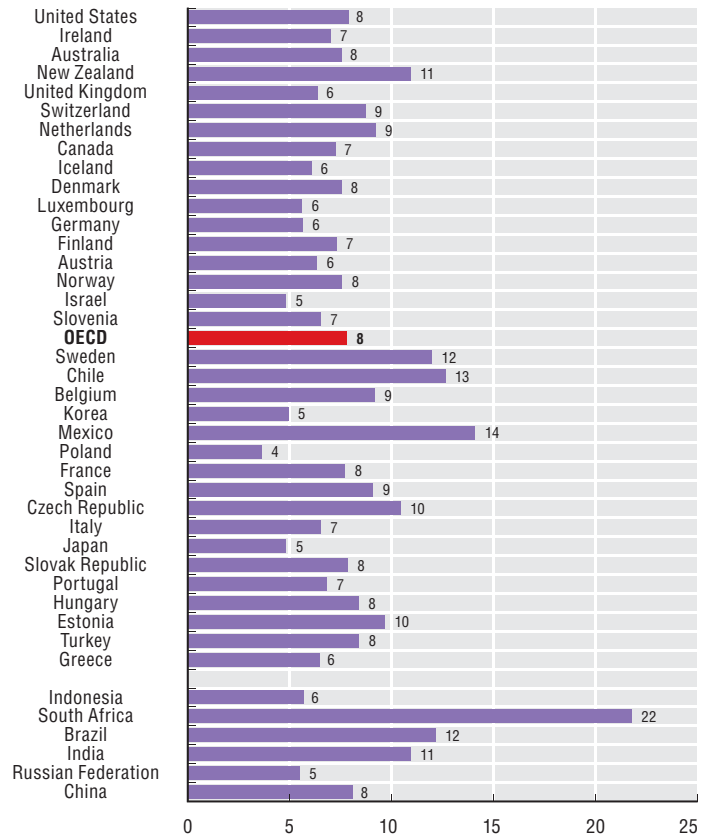
Information on data for Israel: <http://dx.doi.org/10.1787/888932315602>.

### CO3.1. Anglophone countries show the highest levels of pro-social behaviour

Panel A. Pro-social behaviour index, 2010, percentages (↘)

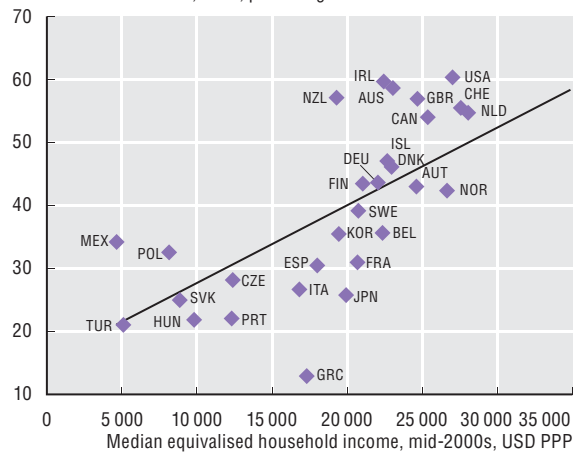


Panel B. Anti-social behaviour index, 2010, percentages



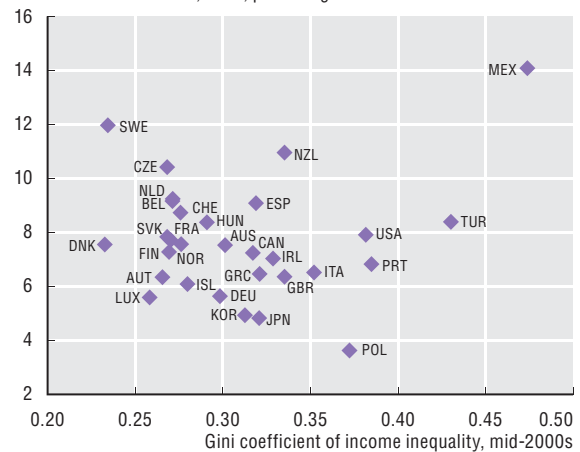
### CO3.2. Higher income countries have more pro-social behaviour

Pro-social behaviour index, 2010, percentages



### CO3.3. A weak positive relationship between income inequality and anti-social behaviour

Anti-social behaviour index, 2010, percentages



Source: Gallup World Poll ([www.gallup.com](http://www.gallup.com)); OECD (2008), *Growing Unequal? Income Distribution and Poverty in OECD Countries* ([www.oecd.org/els/social/inequality](http://www.oecd.org/els/social/inequality)).

StatLink <http://dx.doi.org/10.1787/888932382102>



**From:**  
**Society at a Glance 2011**  
OECD Social Indicators

**Access the complete publication at:**  
[https://doi.org/10.1787/soc\\_glance-2011-en](https://doi.org/10.1787/soc_glance-2011-en)

**Please cite this chapter as:**

OECD (2011), "Pro- and anti-social behaviour", in *Society at a Glance 2011: OECD Social Indicators*, OECD Publishing, Paris.

DOI: [https://doi.org/10.1787/soc\\_glance-2011-28-en](https://doi.org/10.1787/soc_glance-2011-28-en)

This work is published under the responsibility of the Secretary-General of the OECD. The opinions expressed and arguments employed herein do not necessarily reflect the official views of OECD member countries.

This document and any map included herein are without prejudice to the status of or sovereignty over any territory, to the delimitation of international frontiers and boundaries and to the name of any territory, city or area.

You can copy, download or print OECD content for your own use, and you can include excerpts from OECD publications, databases and multimedia products in your own documents, presentations, blogs, websites and teaching materials, provided that suitable acknowledgment of OECD as source and copyright owner is given. All requests for public or commercial use and translation rights should be submitted to [rights@oecd.org](mailto:rights@oecd.org). Requests for permission to photocopy portions of this material for public or commercial use shall be addressed directly to the Copyright Clearance Center (CCC) at [info@copyright.com](mailto:info@copyright.com) or the Centre français d'exploitation du droit de copie (CFC) at [contact@cfcopies.com](mailto:contact@cfcopies.com).