



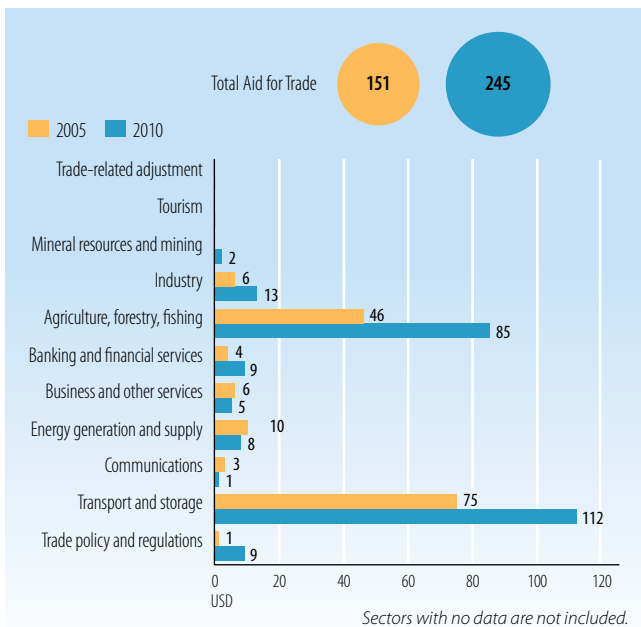
Aid, Trade and Development Indicators for Senegal

INVESTMENT AND FINANCING (INPUTS)

| Indicator (million current USD) | 2005 | 2008 | 2010 | Δ:05-10 |
|--|---------|---------|---------|---------|
| Gross fixed capital formation | 2 582.6 | 4 042.7 | 3 728.0 | 44% |
| of which: public | 866.7 | 1 338.6 | 1 388.4 | 60% |
| of which: private | 1 716.0 | 2 704.0 | 2 339.7 | 36% |
| External financing inflows | | | | |
| FDI inflows | 44.6 | 397.6 | 237.2 | 432% |
| Long-term external debt and IMF disbursements | 387.1 | 560.5 | 485.4 | 25% |
| Trade-related non-concessional flows disbursed | 0.0 | 4.1 | 5.5 | d.b.z. |
| AfT flows disbursed | 150.9 | 292.1 | 245.0 | 62% |
| Remittances and compensation of employees | 788.8 | 1 476.1 | 1 346.0 | 71% |

Sources: OECD, DAC-CRS Aid Activities Database; World Bank, World Development Indicators; World Bank, International Debt Statistics

AfT DISBURSEMENTS BY SECTOR (million current USD)



Source: OECD, DAC-CRS Aid Activities Database

AfT DISBURSEMENTS: TOP DONORS (million current USD)

| 2005 | value | % | 2010 | value | % |
|-----------------|-------|----|-------------------|-------|----|
| World Bank | 59.2 | 39 | EU Institutions | 50.3 | 21 |
| France | 22.1 | 15 | World Bank | 50.2 | 20 |
| EU Institutions | 20.5 | 14 | African Dev. Bank | 38.1 | 16 |
| Spain | 10.2 | 7 | Kuwait | 20.3 | 8 |
| Japan | 8.7 | 6 | Japan | 19.8 | 8 |

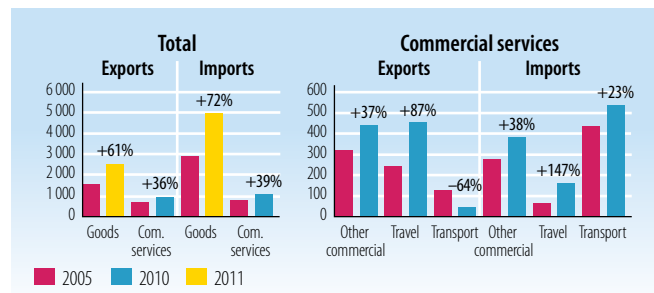
Source: OECD, DAC-CRS Aid Activities Database

TRADE PERFORMANCE (OUTPUTS)

| Indicator | 2005 | 2008 | 2011 | Δ:05-11 |
|---|------|------|------|---------|
| Trade to GDP ratio (%) | 68 | 77 | 53 | -16 |
| Commercial services exports as % of total exports | 30 | 35 | n.a. | n.a. |
| Commercial services imports as % of total imports | 21 | 20 | n.a. | n.a. |
| Non-fuel intermediates (% of merchandise exports) | 40 | 38 | 55 | 15 |
| Non-fuel intermediates (% of merchandise imports) | 34 | 34 | 32 | -2 |

Source: WTO Secretariat

TRADE FLOWS (million current USD)



Source: WTO Secretariat

TOP 5 MARKETS FOR MERCHANDISE EXPORTS (%)

| 2005 | % | 2011 | % |
|---------------|----|-------------|----|
| EU (27) | 24 | Mali | 17 |
| Mali | 19 | EU (27) | 15 |
| India | 13 | India | 14 |
| Gambia | 5 | Switzerland | 9 |
| Guinea-Bissau | 3 | Guinea | 5 |

Source: WTO Secretariat

TOP 5 EXPORT PRODUCTS (% of merchandise exports)

| 2005 | % | 2011 | % |
|------------------------------|----|--------------------------------------|----|
| Petroleum products | 16 | Petroleum products | 14 |
| Inorganic chemical elements | 13 | Inorganic chemical elements | 13 |
| Fish, fresh, chilled, frozen | 9 | Gold, non-monetary excluding ores | 10 |
| Crustaceans, molluscs etc. | 7 | Lime, cement, construction materials | 9 |
| Petroleum oils, crude | 5 | Fish, fresh, chilled, frozen | 7 |

Source: WTO Secretariat

TOP 5 MARKETS FOR MERCHANDISE IMPORTS (%)

| 2005 | % | 2011 | % |
|---------------|----|---------------|----|
| EU (27) | 44 | EU (27) | 41 |
| Nigeria | 10 | Nigeria | 9 |
| Thailand | 5 | China | 7 |
| Brazil | 4 | United States | 5 |
| United States | 4 | Turkey | 4 |

Source: WTO Secretariat

TOP 5 IMPORT PRODUCTS (% of merchandise imports)

| 2005 | % | 2011 | % |
|----------------------------------|----|------------------------------|----|
| Petroleum oils, crude | 11 | Petroleum products | 19 |
| Rice | 11 | Petroleum oils, crude | 9 |
| Petroleum products | 9 | Rice | 6 |
| Passenger motor vehicles ex. bus | 3 | Iron, steel bar, shapes etc. | 3 |
| Medicaments | 3 | Wheat, meslin, unmilled | 3 |

Source: WTO Secretariat



AIDFORTRADE AT A GLANCE 2013

TRADE INDICATORS (OUTCOMES)

| Indicator | 2005 | 2011 |
|--|------|------|
| GDP growth (%) | 5.6 | 2.6 |
| Number of exporters | 661 | 776 |
| Product export concentration (0 to 1) | 0.05 | 0.06 |
| Goods RTAs notified to the WTO | n.a. | 2 |
| Services EIAs notified to the WTO | n.a. | 0 |
| Services sectors with GATS commitments | 29 | 29 |
| Tariffs (% , 2006 and 2011) | | |
| Imports: simple avg. MFN applied | 12.0 | 11.9 |
| Imports: weighted avg. MFN applied | 9.1 | 9.2 |
| Exports: weighted avg. faced | 3.4 | 3.3 |
| Exports: duty free (value in %) | 75.7 | 55.9 |

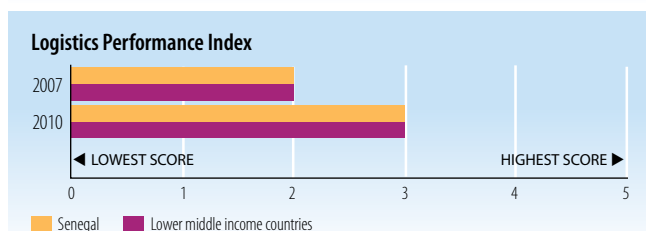
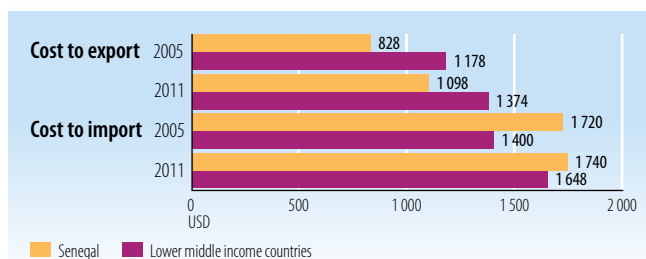
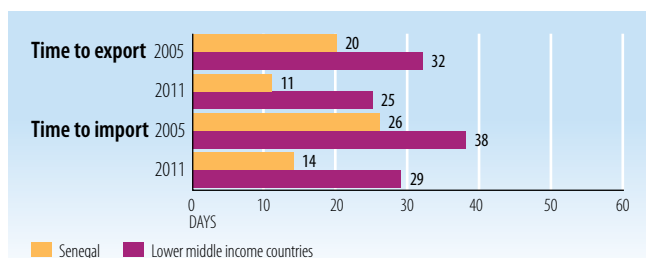
Sources: UN Comtrade; World Bank, Exporter Dynamics Database; World Bank, World Development Indicators; WTO, Trade and Tariff Profiles

EXPORT SHARES BY REGION (%)

| | 2005 | 2011 |
|------------------------------------|------|------|
| Africa | 46.9 | 45.5 |
| Asia | 15.7 | 17.0 |
| Commonwealth of Independent States | 0.0 | 0.0 |
| Europe | 23.9 | 24.3 |
| Middle East | 0.4 | 3.9 |
| North America | 1.2 | 0.3 |
| South and Central America | 0.2 | 0.1 |

Source: WTO, Trade and Tariff Profiles

TRADE FACILITATION INDICATORS



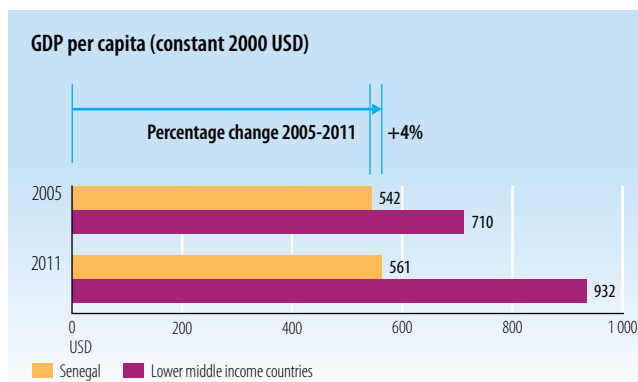
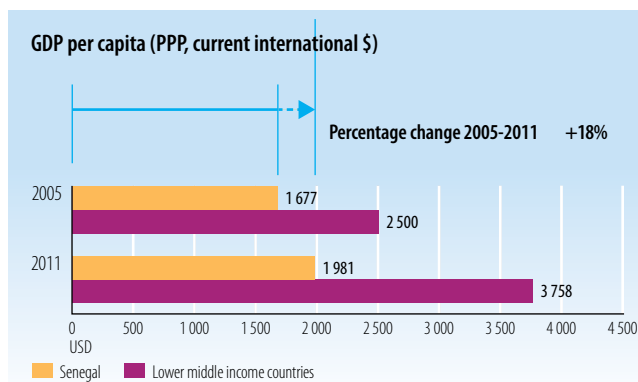
Source: World Bank, World Development Indicators

DEVELOPMENT INDICATORS (IMPACTS)

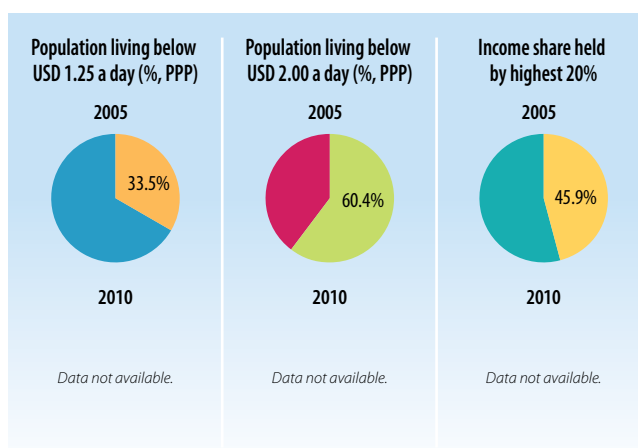
| Indicator | 2005 | 2010 |
|--|------|------|
| Unemployment (% of total labour force) | 10.0 | n.a. |
| Labour force, female (% of total labour force) | 43.4 | 43.9 |
| Net ODA received (% of GNI) | 8.2 | 7.3 |
| Import duties collected (% of tax revenue) | n.a. | n.a. |
| Total debt service (% of total exports) | 8.3 | 4.8 |
| Human Development Index (0 to 1) | 0.43 | 0.46 |

Sources: UNDP, International Human Development Indicators; World Bank, World Development Indicators

GROSS DOMESTIC PRODUCT

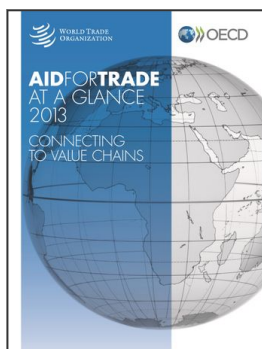


Source: World Bank, World Development Indicators



Source: World Bank, World Development Indicators

StatLink <http://dx.doi.org/10.1787/888932845930>



From:
Aid for Trade at a Glance 2013
Connecting to Value Chains

Access the complete publication at:
https://doi.org/10.1787/aid_glance-2013-en

Please cite this chapter as:

OECD/World Trade Organization (2013), "Aid, Trade and Development Indicators for Senegal", in *Aid for Trade at a Glance 2013: Connecting to Value Chains*, World Trade Organization, Geneva/OECD Publishing, Paris.

DOI: https://doi.org/10.1787/aid_glance-2013-77-en

This work is published under the responsibility of the Secretary-General of the OECD. The opinions expressed and arguments employed herein do not necessarily reflect the official views of OECD member countries.

This document, as well as any data and map included herein, are without prejudice to the status of or sovereignty over any territory, to the delimitation of international frontiers and boundaries and to the name of any territory, city or area. Extracts from publications may be subject to additional disclaimers, which are set out in the complete version of the publication, available at the link provided.

The use of this work, whether digital or print, is governed by the Terms and Conditions to be found at <http://www.oecd.org/termsandconditions>.